
Summary of 2020-2024 LSAT Correlation Study Results

LSAC's mission is to advance law and justice by promoting access, equity, and fairness in law school admission and supporting the learning journey from prelaw through practice. See <https://www.lsac.org/about>.

©2025 Law School Admission Council, Inc. All rights reserved.

No part of this work, including information, data, or other portions of the work published in hardcopy or electronic format, may be reproduced, distributed, or transmitted in any form or by any means, including photocopying, recording, or other electronic or mechanical methods, without expressed permission from the publisher. For information and permission requests, contact Assessment Publications at AssessmentPublications@LSAC.org.

LSAC® is a trademark of the Law School Admission Council. For a full list of LSAC's trademarks, please see <https://www.lsac.org/about/lsac-policies/trademarks>. LSAC's trademarks are solely for use by LSAC and its affiliates, subsidiaries, and licensees. Use of any LSAC logo or trademark is strictly prohibited without the prior written consent of an authorized representative of LSAC.

LSAC's fees, policies, and procedures relating to, but not limited to, test registration, test administration, test score reporting, misconduct and irregularities, Credential Assembly Service (CAS)SM, and other matters may change without notice at any time. Up-to-date LSAC policies and procedures are available at LSAC.org.

Table of Contents

Summary	1
Trends in Study Participants.....	2
Trends in Correlation Results	5
 Part 1. Results from the 2024 LSAT Correlation Study	 7
Part 2. Results from the 2023 LSAT Correlation Study	12
Part 3. Results from the 2022 LSAT Correlation Study	17
Part 4. Results from the 2021 LSAT Correlation Study	22
Part 5. Results from the 2020 LSAT Correlation Study	27

Summary

Since the inception of the Law School Admission Test (LSAT), LSAC has sought to evaluate and ensure its validity for use in the law school admission process. As predictive validity is an important component in the overall evaluation of test validity, LSAC has carried out predictive validity studies, also called LSAT Correlation Studies, since the test was first administered. The LSAT Correlation Studies evaluate the effectiveness of LSAT scores, undergraduate grade point average (UGPA), and the combination of LSAT scores and UGPA for predicting a student's first-year average (FYA) in law school. This report provides summaries of the combined results for the law schools participating in the 2020, 2021, 2022, 2023, and 2024 LSAT Correlation Studies. Therefore, these correlation studies represent a large span of LSAT test takers from about 2015 to 2023. The results of these studies serve to document and support the strong predictive validity of LSAT scores for use in the law school admission process. The findings across all five correlation studies are consistent with all prior reports in showing that LSAT scores are a better predictor of law school performance than are UGPAs, and that the combination of LSAT scores and UGPA continues to be the best predictor of FYA.

For most schools, each year's correlation report was based on full-time students in the prior three fall entering classes. Records for those who were not considered full-time students or who did not have a traditional UGPA were excluded from the analysis. Research has shown that combining the 3 most recent years of data controls for common year-to-year fluctuations. If less than 3 years of data were available for a given school, then the results for that school may not be as stable and representative as they would be with 3 years of data.

Each year, two analyses were completed and sent to each school: one based on average LSAT scores and the other based on highest LSAT scores. Both average LSAT scores and highest LSAT scores are calculated only using reportable/non-canceled scores. The LSAT Correlation Studies examine the correlations among LSAT score, UGPA, and FYA. Research has shown that for the majority of schools, although not all, average LSAT score is a slightly better predictor of first-year performance than highest LSAT score.

Trends in Study Participants

The following figures summarize the number of full school participants (a full school participant is a school that met all participation requirements and submitted their data to LSAC in time for analysis), mean combined class size, mean and standard deviation of average LSAT score for matriculants, and mean and standard deviation of UGPA for matriculants. While the mean LSAT scores of matriculants have increased over the past 4 years, the standard deviation of LSAT scores has also increased, meaning matriculants' LSAT scores have not suffered from a ceiling effect. A ceiling effect occurs when a significant number of individuals score at the highest points—limiting the variance and limiting the ability to distinguish among high performers. However, with respect to UGPA, matriculants' UGPAs have increased over the past 5 years while the standard deviations have decreased, meaning UGPA has suffered from a ceiling effect, making it difficult to use UGPA to distinguish among high performers.

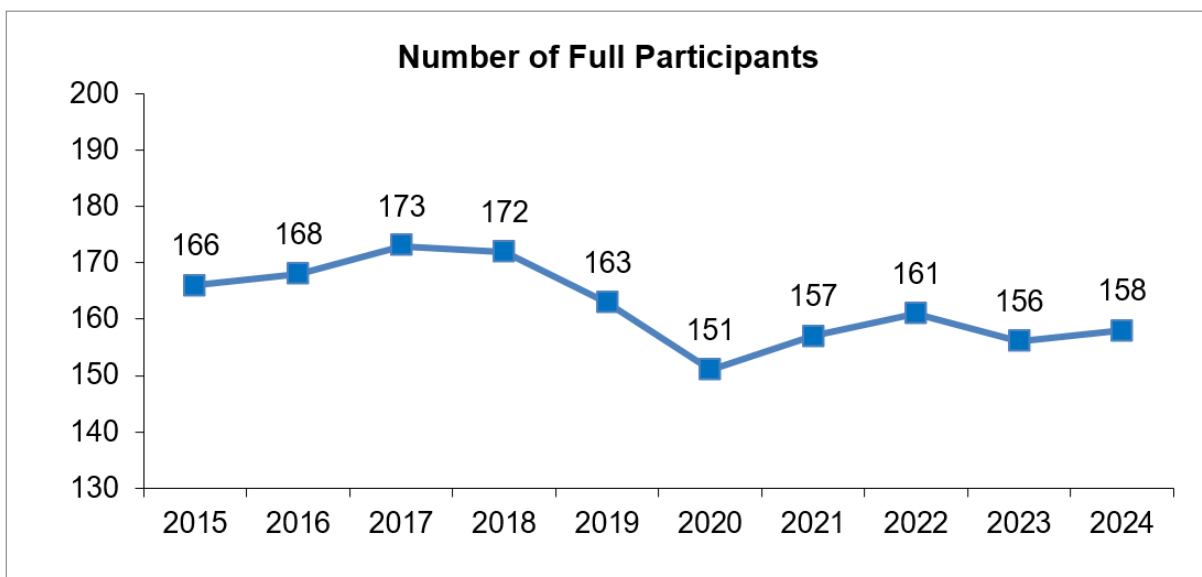


FIGURE A. Trends in full LSAT Correlation Study participation from 2015 to 2024. Numbers by year are as follows: 166 in 2015, 168 in 2016, 173 in 2017, 172 in 2018, 163 in 2019, 151 in 2020, 157 in 2021, 161 in 2022, 156 in 2023, and 158 in 2024.

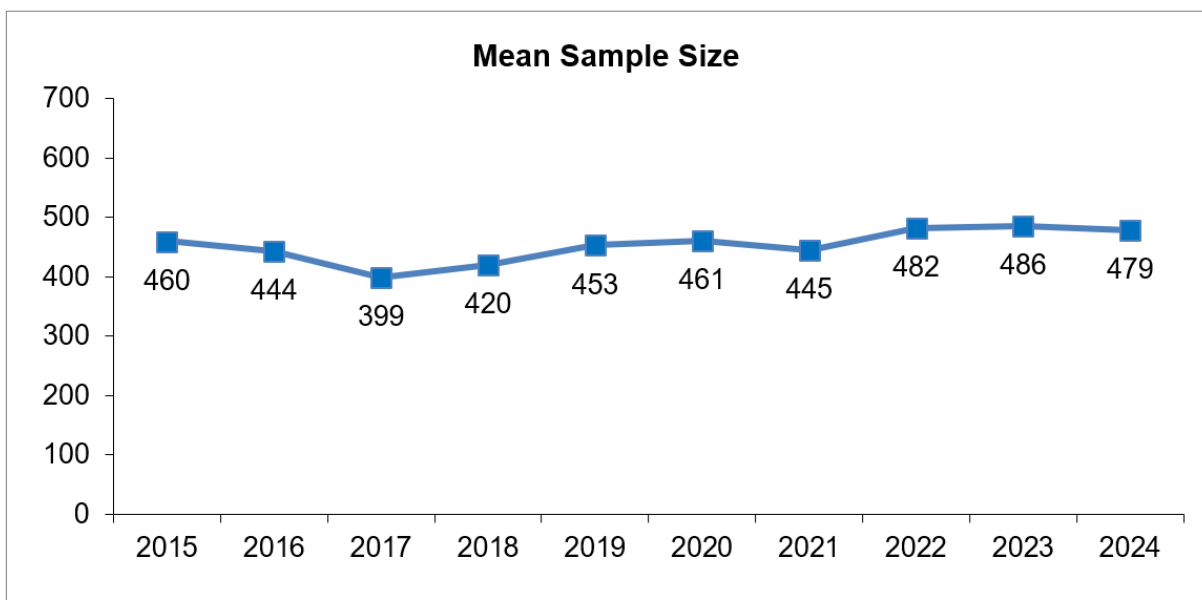


FIGURE B. Trends in mean combined class size from 2015 to 2024. Mean combined class sizes by year are as follows: 460 in 2015, 444 in 2016, 399 in 2017, 420 in 2018, 453 in 2019, 461 in 2020, 445 in 2021, 482 in 2022, 486 in 2023, and 479 in 2024.

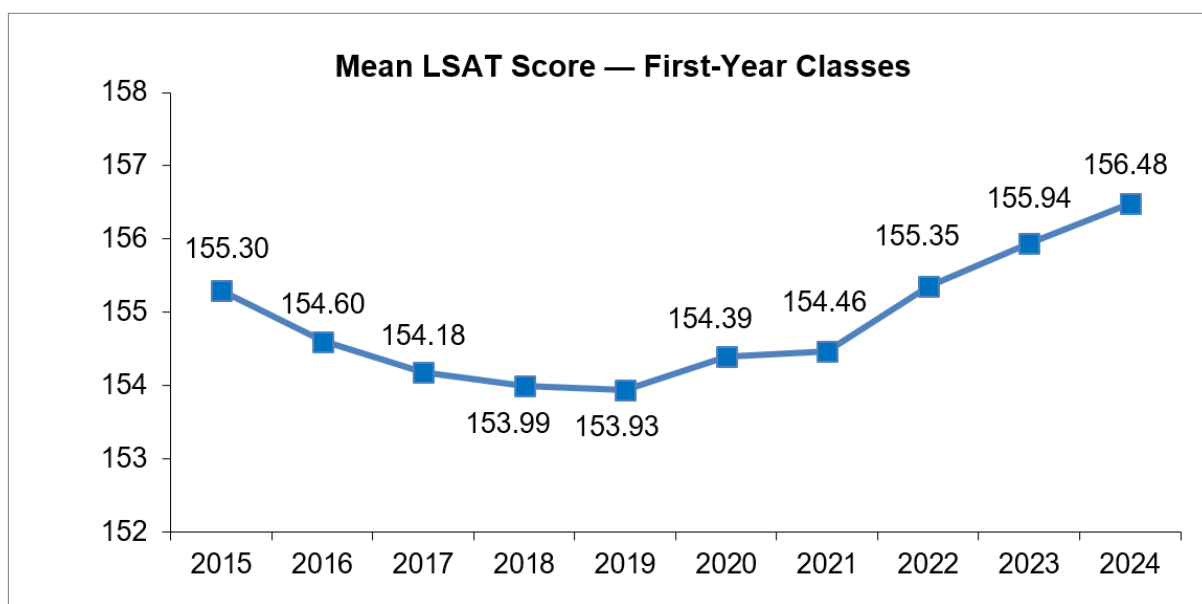


FIGURE C. Mean LSAT scores for combined first-year classes from 2015 to 2024. Mean LSAT scores by year are as follows: 155.30 in 2015, 154.60 in 2016, 154.18 in 2017, 153.99 in 2018, 153.93 in 2019, 154.39 in 2020, 154.46 in 2021, 155.35 in 2022, 155.94 in 2023, and 156.48 in 2024.

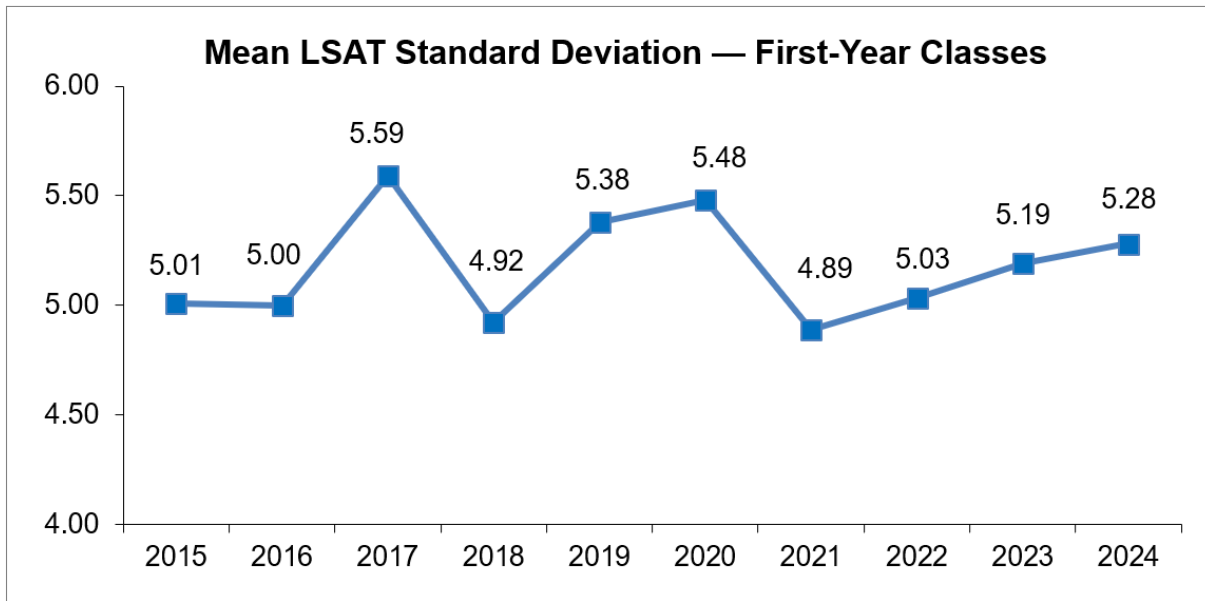


FIGURE D. Mean LSAT standard deviations for combined first-year classes from 2015 to 2024. Standard deviations by year are as follows: 5.01 in 2015, 5.00 in 2016, 5.59 in 2017, 4.92 in 2018, 5.38 in 2019, 5.48 in 2020, 4.89 in 2021, 5.03 in 2022, 5.19 in 2023, and 5.28 in 2024.

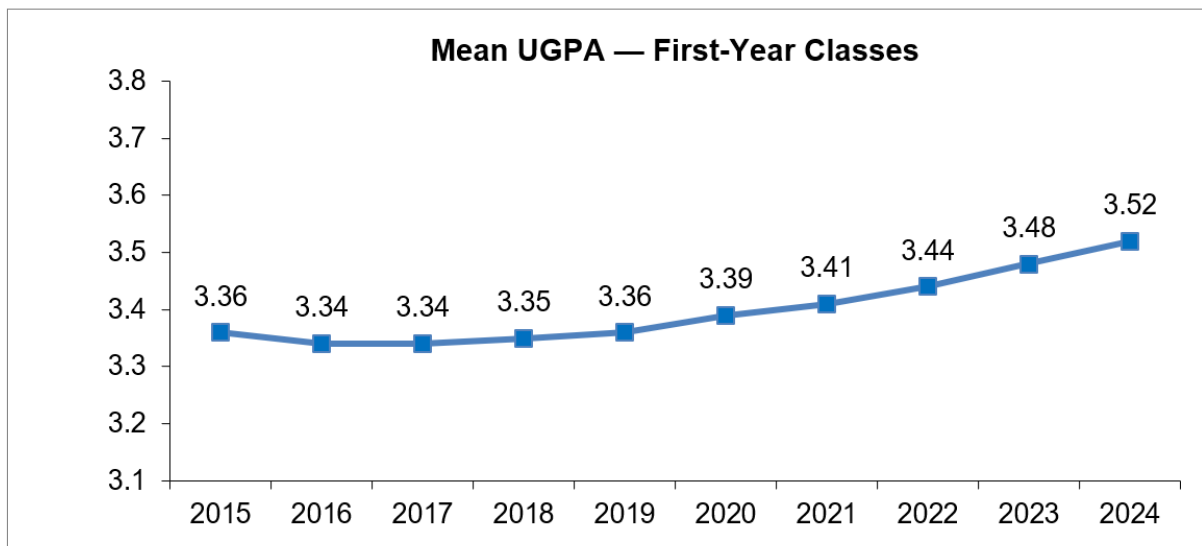


FIGURE E. Mean UGPA for combined first-year classes from 2015 to 2024. Mean UGPAs by year are as follows: 3.36 in 2015, 3.34 in 2016, 3.34 in 2017, 3.35 in 2018, 3.36 in 2019, 3.39 in 2020, 3.41 in 2021, 3.44 in 2022, 3.48 in 2023, and 3.52 in 2024.

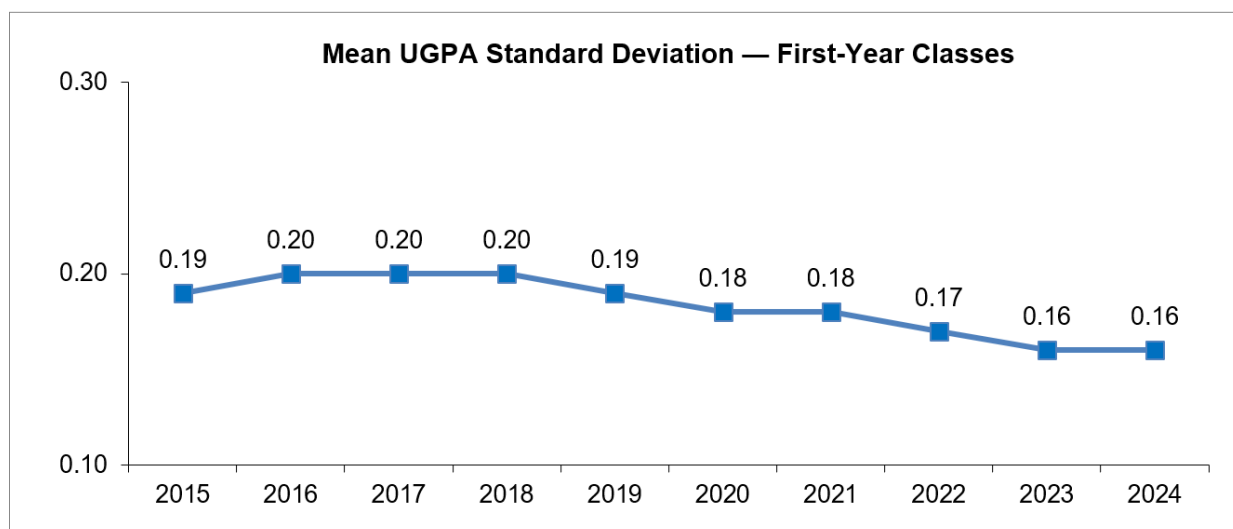


FIGURE F. Mean UGPA standard deviations for combined first-year classes from 2015 to 2024. Standard deviations by year are as follows: 0.19 in 2015, 0.20 in 2016, 0.20 in 2017, 0.20 in 2018, 0.19 in 2019, 0.18 in 2020, 0.18 in 2021, 0.17 in 2022, 0.16 in 2023, and 0.16 in 2024.

Trends in Correlation Results

A correlation coefficient is a measure of the linear relationship between two variables. Values range from 1 for a perfect positive correlation to -1 for a perfect negative correlation. The magnitude of the coefficient indicates the strength of the correlation. A value of zero indicates that there is no correlation between the two variables.

The LSAT Correlation Studies covered in this report examine the correlations among LSAT score, UGPA, and FYA as well as the correlation between predicted and actual FYA. The findings in this report are consistent with all prior reports in showing that: LSAT scores are a better predictor of law school performance than are UGPAs; the combination of LSAT scores and UGPA continues to be the best predictor of FYA; and for the majority of schools, although not all, average LSAT score is a slightly better predictor of first-year performance than highest LSAT score.

The correlations based on applicants provide the best correlation information for admission decisions. However, FYA is only available for matriculants. Therefore, raw correlations are produced for matriculants and then a correction is applied to estimate the correlations for applicants. Often the corrected correlations for applicants are higher than the raw correlations for matriculants due to restriction of range. Restriction of range occurs when the range/variability of one of the variables in the correlation is smaller for some reason. Restriction of range often occurs due to the nature of the admission process—for example, the variability of test takers is larger than the variability of

applicants, or the variability of applicants is larger than the variability of matriculants. The LSAT Correlation Studies therefore apply a multivariate correction for restriction of range so that the correlations for applicants can be examined.

TABLE A
Trends in raw correlation results using average LSAT score

	2015	2016	2017	2018	2019	2020	2021	2022	2023	2024
LSAT/FYA	0.40	0.41	0.41	0.41	0.40	0.40	0.38	0.39	0.40	0.42
UGPA/FYA	0.27	0.27	0.27	0.26	0.26	0.25	0.26	0.25	0.25	0.24
LSAT/UGPA	-0.04	-0.03	-0.04	-0.04	-0.06	-0.05	-0.04	-0.02	-0.03	-0.04
LSAT+UGPA/FYA	0.50	0.50	0.50	0.50	0.49	0.49	0.48	0.47	0.48	0.50

TABLE B
Trends in raw correlation results using highest LSAT score

	2015	2016	2017	2018	2019	2020	2021	2022	2023	2024
LSAT/FYA	0.38	0.38	0.38	0.38	0.37	0.36	0.35	0.35	0.36	0.37
UGPA/FYA	0.27	0.27	0.27	0.26	0.26	0.25	0.26	0.25	0.25	0.24
LSAT/UGPA	-0.07	-0.07	-0.07	-0.08	-0.09	-0.09	-0.09	-0.08	-0.09	-0.11
LSAT+UGPA/FYA	0.48	0.49	0.49	0.49	0.48	0.47	0.46	0.45	0.46	0.47

TABLE C
Trends in corrected correlation results using average LSAT score

	2015	2016	2017	2018	2019	2020	2021	2022	2023	2024
LSAT/FYA	0.61	0.61	0.61	0.60	0.60	0.59	0.57	0.56	0.57	0.60
UGPA/FYA	0.44	0.44	0.43	0.43	0.42	0.41	0.42	0.40	0.40	0.41
LSAT/UGPA	0.28	0.28	0.27	0.26	0.25	0.25	0.25	0.25	0.25	0.25
LSAT+UGPA/FYA	0.67	0.67	0.67	0.67	0.66	0.65	0.64	0.62	0.64	0.66

TABLE D
Trends in corrected correlation results using highest LSAT score

	2015	2016	2017	2018	2019	2020	2021	2022	2023	2024
LSAT/FYA	0.60	0.61	0.60	0.60	0.59	0.58	0.56	0.55	0.55	0.58
UGPA/FYA	0.44	0.44	0.43	0.43	0.42	0.41	0.42	0.40	0.41	0.42
LSAT/UGPA	0.27	0.27	0.26	0.25	0.24	0.23	0.23	0.22	0.21	0.21
LSAT+UGPA/FYA	0.67	0.67	0.67	0.67	0.66	0.65	0.64	0.62	0.63	0.66

Part 1. Results from the 2024 LSAT Correlation Study

Reports on Correlation of First-Year Performance with LSAT Score and UGPA based on the first-year data for students in the 2023 fall entering class were sent to participating schools in January 2025, after the 2023-2024 first-year grades could be reported and the analyses could be completed. The following tables and figures summarize the results from the 2024 LSAT Correlation Study. For most schools, the study was based on full-time students in the 2021, 2022, and 2023 fall entering classes. Schools that instituted grade-scale changes or that did not participate in all 3 study years may have data representing a different set of entering classes. The findings based on matriculants indicate that the combination of LSAT score and UGPA is usually better at predicting first-year performance than either variable alone. And for the majority of schools, although not all, average LSAT was a better predictor than highest LSAT.

In addition, the study includes results for the school applicant pools and provides a multivariate correction for restriction of range to estimate the correlations of the applicant pool versus the matriculants on which these data are based. The corrected correlation estimates for the applicant pools (Table 1B-b) are higher than the raw correlations for the matriculant group (Table 1B-a). The findings based on the applicant pool also indicate that the combination of LSAT score and UGPA is usually better at predicting first-year performance than either variable alone.

TABLE 1A
Descriptive statistics for full participants in the 2024 LSAT Correlation Study

Statistic	Combined Class Size	Average LSAT	Highest LSAT	UGPA ^a
Total participants	157	157	157	151
Number of schools ^b	145	145	145	145
Mean	478.94	156.48	158.12	3.52
SD	246.61	5.28	5.38	0.16
Minimum	122	145.09	147.24	3.14
Maximum	1,475	169.93	171.68	3.85
25th percentile	313	153.00	154.38	3.40
50th percentile (median)	417	155.92	157.36	3.53
75th percentile	556	160.43	162.00	3.64

^aOnly schools with standard UGPA scale data and U.S. ABA status are included.

^bSummary data are based on schools that met all participation requirements and submitted their data to LSAC by January 2025.

TABLE 1B-a

Summary of raw Pearson correlations for participants in the 2024 LSAT Correlation Study based on LSAT score

Statistic	LSAT (Average) /FYA	LSAT (Highest)/ FYA	UGPA/ FYA	LSAT (Average) /UGPA	LSAT (Highest)/ UGPA	LSAT (Average) +UGPA/ FYA	LSAT (Highest) +UGPA/ FYA
Mean	0.42	0.37	0.24	-0.04	-0.11	0.50	0.47
SD	0.08	0.08	0.09	0.13	0.15	0.08	0.08
Minimum	0.22	0.17	-0.02	-0.41	-0.55	0.26	0.24
Maximum	0.61	0.58	0.49	0.31	0.31	0.69	0.68
25th percentile	0.37	0.32	0.19	-0.13	-0.21	0.45	0.42
50th percentile (median)	0.42	0.37	0.24	-0.03	-0.09	0.50	0.48
75th percentile	0.47	0.43	0.30	0.03	-0.01	0.55	0.53

TABLE 1B-b

Summary of corrected correlations for participants in the 2024 LSAT Correlation Study based on LSAT score

Statistic	LSAT (Average) /FYA	LSAT (Highest)/ FYA	UGPA/ FYA	LSAT (Average) /UGPA	LSAT (Highest)/ UGPA	LSAT (Average) +UGPA/ FYA	LSAT (Highest)+ UGPA/ FYA
Mean	0.60	0.58	0.41	0.25	0.21	0.66	0.66
SD	0.06	0.06	0.07	0.05	0.05	0.06	0.06
Minimum	0.33	0.34	0.23	0.13	0.09	0.37	0.38
Maximum	0.73	0.75	0.61	0.40	0.39	0.83	0.85
25th percentile	0.56	0.54	0.37	0.21	0.18	0.64	0.63
50th percentile (median)	0.60	0.59	0.42	0.24	0.21	0.67	0.66
75th percentile	0.64	0.63	0.45	0.27	0.24	0.70	0.70

TABLE 1C

Differences in correlation coefficients in the 2024 LSAT Correlation Study (average LSAT score minus highest LSAT score)

Difference Statistic	LSAT+UGPA	LSAT Only
Mean	0.02	0.05
SD	0.02	0.03
Minimum	-0.02	-0.03
Maximum	0.11	0.12
25 th percentile	0.01	0.03
50 th percentile (median)	0.02	0.05
75 th percentile	0.04	0.06

TABLE 1D

Summary of proportional contributions by predictor variable in predictive formulas in the 2024 LSAT Correlation Study

Statistic	LSAT (Average)	UGPA	LSAT (Highest)	UGPA
Mean	62.27	37.73	58.57	41.43
SD	7.40	7.40	7.26	7.26
Minimum	43.82	17.96	35.66	22.37
Maximum	82.04	56.18	77.63	64.34
25th percentile	57.98	32.27	54.66	36.60
50th percentile (median)	61.98	38.02	58.41	41.59
75th percentile	67.73	42.02	63.40	45.34

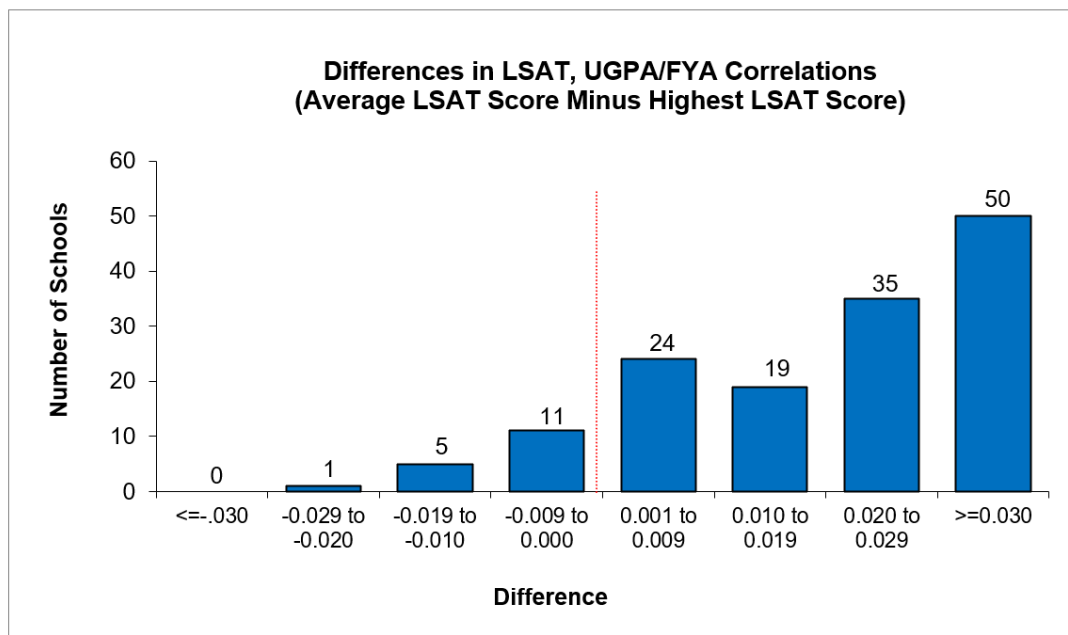


FIGURE 1A. Differences in LSAT+UGPA/FYA correlations (average LSAT score minus highest LSAT score) in the 2024 LSAT Correlation Study: 1 school had a difference of -0.029 to -0.020 ; 5 schools had a difference of -0.019 to -0.010 ; 11 schools had a difference of -0.009 to 0.000 ; 24 schools had a difference of 0.001 to 0.009 ; 19 schools had a difference of 0.010 to 0.019 ; 35 schools had a difference of 0.020 to 0.029 ; and 50 schools had a difference greater than or equal to 0.030 .

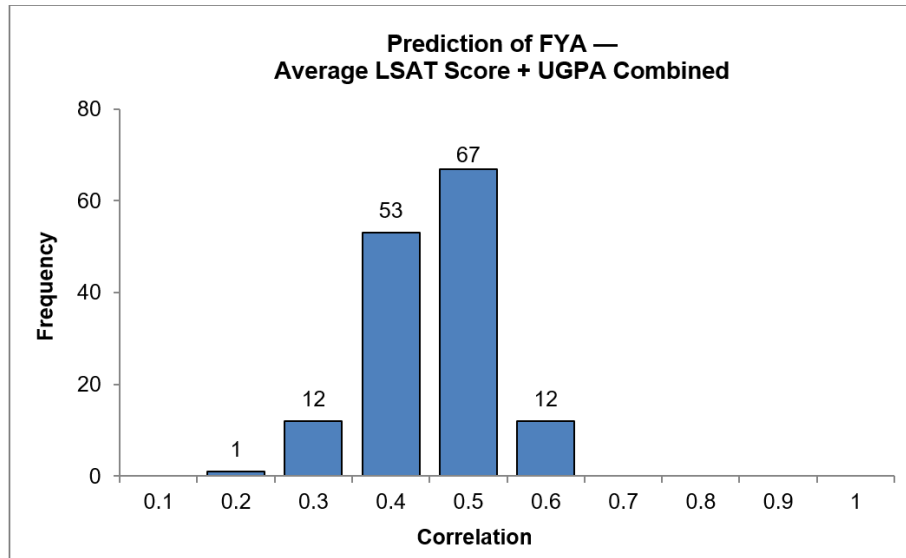


FIGURE 1B-a. Distribution of raw correlation results (average LSAT score + UGPA combined) in the 2024 LSAT Correlation Study: 1 school had a correlation of 0.2; 12 schools had a correlation of 0.3; 53 schools had a correlation of 0.4; 67 schools had a correlation of 0.5; and 12 schools had a correlation of 0.6.

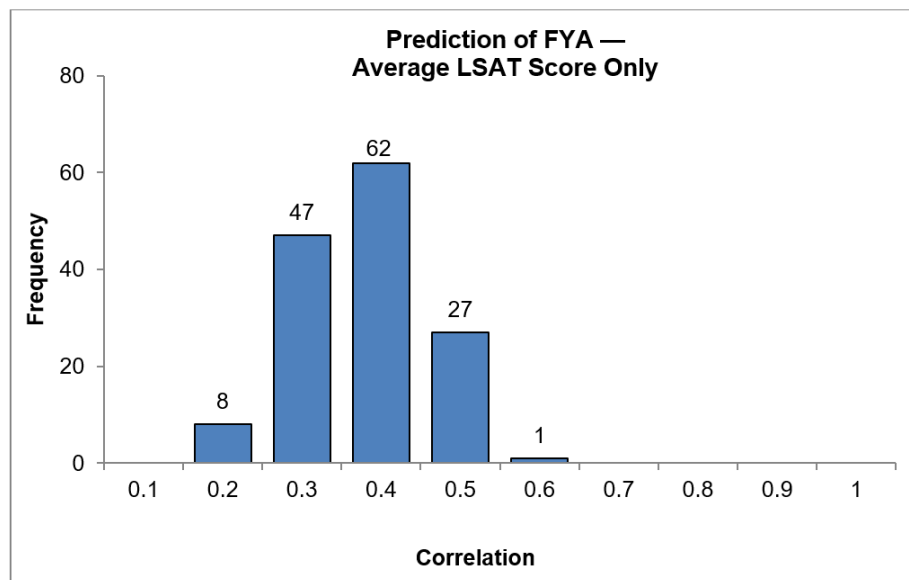


FIGURE 1B-b. Distribution of raw correlation results (average LSAT score only) in the 2024 LSAT Correlation Study: 8 schools had a correlation of 0.2; 47 schools had a correlation of 0.3; 62 schools had a correlation of 0.4; 27 schools had a correlation of 0.5; and 1 school had a correlation of 0.6.

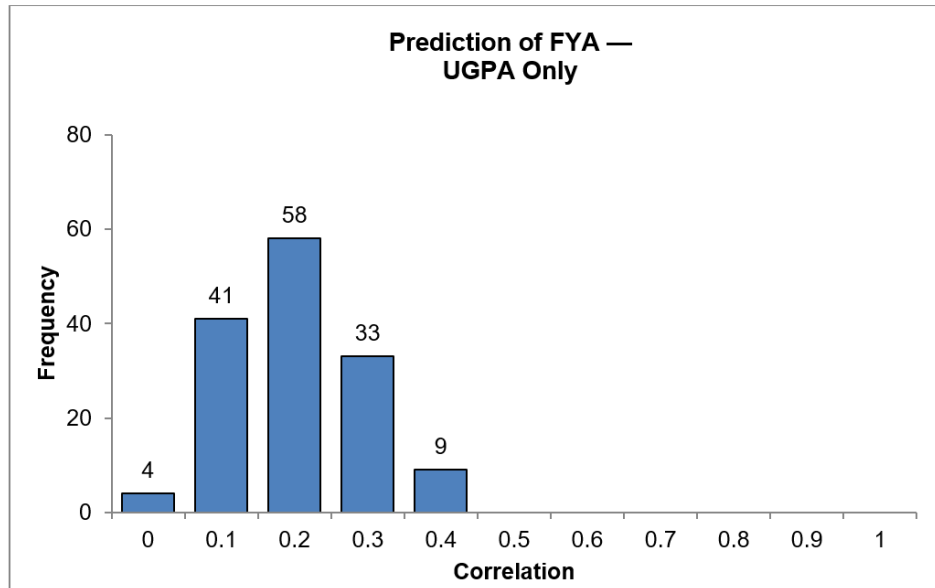


FIGURE 1B-c. Distribution of raw correlation results (UGPA only) in the 2024 LSAT Correlation Study: 4 schools had a correlation of 0.0; 41 schools had a correlation of 0.1; 58 schools had a correlation of 0.2; 33 schools had a correlation of 0.3; and 9 schools had a correlation of 0.4.

Part 2. Results from the 2023 LSAT Correlation Study

Reports on Correlation of First-Year Performance with LSAT Score and UGPA based on the first-year data for students in the 2022 fall entering class were sent to participating schools in January 2024, after the 2022-2023 first-year grades could be reported and the analyses could be completed. The following tables and figures summarize the results from the 2023 LSAT Correlation Study. For most schools, the study was based on full-time students in the 2020, 2021, and 2022 fall entering classes. Schools that instituted grade-scale changes or that did not participate in all 3 study years may have data representing a different set of entering classes. The findings based on matriculants indicate that the combination of LSAT score and UGPA is usually better at predicting first-year performance than either variable alone. And for the majority of schools, although not all, average LSAT was a better predictor than highest LSAT.

In addition, the study includes results for the school applicant pools and provides a multivariate correction for restriction of range to estimate the correlations of the applicant pool versus the matriculants on which these data are based. The corrected correlation estimates for the applicant pools (Table 2B-b) are higher than the raw correlations for the matriculant group (Table 2B-a). The findings based on the applicant pool also indicate that the combination of LSAT score and UGPA is usually better at predicting first-year performance than either variable alone.

TABLE 2A
Descriptive statistics for full participants in the 2023 LSAT Correlation Study

Statistic	Combined Class Size	Average LSAT	Highest LSAT	UGPA ^a
Total participants	156	156	156	152
Number of schools ^b	141	141	141	137
Mean	486.31	155.94	157.48	3.48
SD	250.70	5.19	5.24	0.16
Minimum	79	144.23	146.37	3.12
Maximum	1,456	169.51	171.53	3.83
25th percentile	314	152.46	153.98	3.36
50th percentile (median)	442	155.15	156.71	3.48
75th percentile	590	159.49	161.02	3.60

^aOnly schools with standard UGPA scale data are included.

^bSummary data are based on schools that met all participation requirements and submitted their data by January 2024.

TABLE 2B-a

Summary of raw Pearson correlations for participants in the 2023 LSAT Correlation Study based on LSAT score

Statistic	LSAT (Average) /FYA	LSAT (Highest)/ FYA	UGPA/ FYA	LSAT (Average) /UGPA	LSAT (Highest)/ UGPA	LSAT (Average) +UGPA/ FYA	LSAT (Highest) +UGPA/ FYA
Mean	0.40	0.36	0.25	-0.03	-0.09	0.48	0.46
SD	0.08	0.09	0.09	0.13	0.15	0.08	0.09
Minimum	0.19	0.17	0.03	-0.40	-0.53	0.23	0.19
Maximum	0.60	0.57	0.46	0.32	0.32	0.69	0.65
25th percentile	0.34	0.29	0.18	-0.12	-0.20	0.43	0.41
50th percentile (median)	0.40	0.35	0.24	-0.02	-0.10	0.48	0.46
75th percentile	0.45	0.41	0.31	0.06	0.02	0.54	0.52

TABLE 2B-b

Summary of corrected correlations for participants in the 2023 LSAT Correlation Study based on LSAT score

Statistic	LSAT (Average) /FYA	LSAT (Highest)/ FYA	UGPA/ FYA	LSAT (Average) /UGPA	LSAT (Highest)/ UGPA	LSAT (Average) +UGPA/ FYA	LSAT (Highest) +UGPA/ FYA
Mean	0.57	0.55	0.40	0.24	0.21	0.64	0.63
SD	0.07	0.07	0.07	0.05	0.05	0.07	0.07
Minimum	0.30	0.32	0.20	0.16	0.11	0.34	0.35
Maximum	0.70	0.72	0.59	0.39	0.38	0.79	0.77
25th percentile	0.54	0.52	0.37	0.21	0.18	0.60	0.59
50th percentile (median)	0.57	0.56	0.41	0.24	0.21	0.64	0.64
75th percentile	0.62	0.59	0.45	0.27	0.24	0.68	0.68

TABLE 2C

Differences in correlation coefficients in the 2023 LSAT Correlation Study (average LSAT score minus highest LSAT score)

Difference Statistic	LSAT+UGPA	LSAT Only
Mean	0.02	0.04
SD	0.02	0.03
Minimum	-0.02	-0.01
Maximum	0.12	0.15
25 th percentile	0.01	0.02
50 th percentile (median)	0.02	0.04
75 th percentile	0.03	0.06

TABLE 2D

Summary of proportional contributions by predictor variable in predictive formulas in the 2023 LSAT Correlation Study

Statistic	LSAT (Average)	UGPA	LSAT (Highest)	UGPA
Mean	60.94	39.06	57.51	42.49
SD	7.79	7.79	7.39	7.39
Minimum	43.23	20.39	36.01	23.46
Maximum	79.61	56.77	76.54	63.99
25th percentile	56.09	34.63	52.82	37.76
50th percentile (median)	60.83	39.17	56.94	43.06
75th percentile	65.37	43.91	62.24	47.18

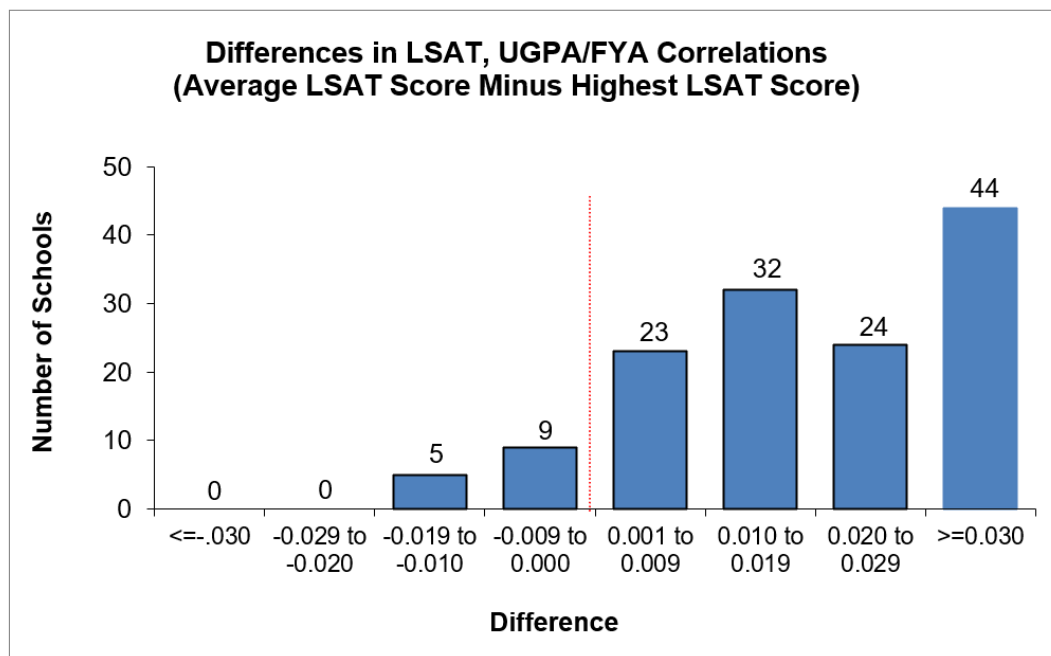


FIGURE 2A. Differences in LSAT+UGPA/FYA correlations (average LSAT score minus highest LSAT score) in the 2023 LSAT Correlation Study: 5 schools had a difference of $-.019$ to $-.010$; 9 schools had a difference of $-.009$ to 0.000 ; 23 schools had a difference of 0.001 to 0.009 ; 32 schools had a difference of 0.010 to 0.019 ; 24 schools had a difference of 0.020 to 0.029 ; and 44 schools had a difference greater than or equal to 0.030 .

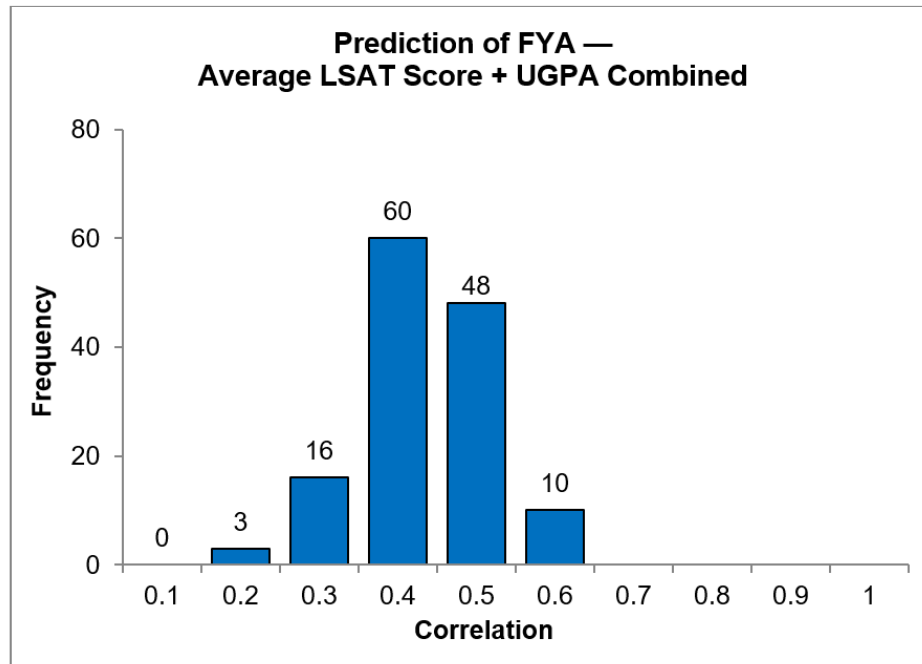


FIGURE 2B-a. Distribution of raw correlation results (average LSAT score + UGPA combined) in the 2023 LSAT Correlation Study: 3 schools had a correlation of 0.2; 16 schools had a correlation of 0.3; 60 schools had a correlation of 0.4; 48 schools had a correlation of 0.5; and 10 schools had a correlation of 0.6.

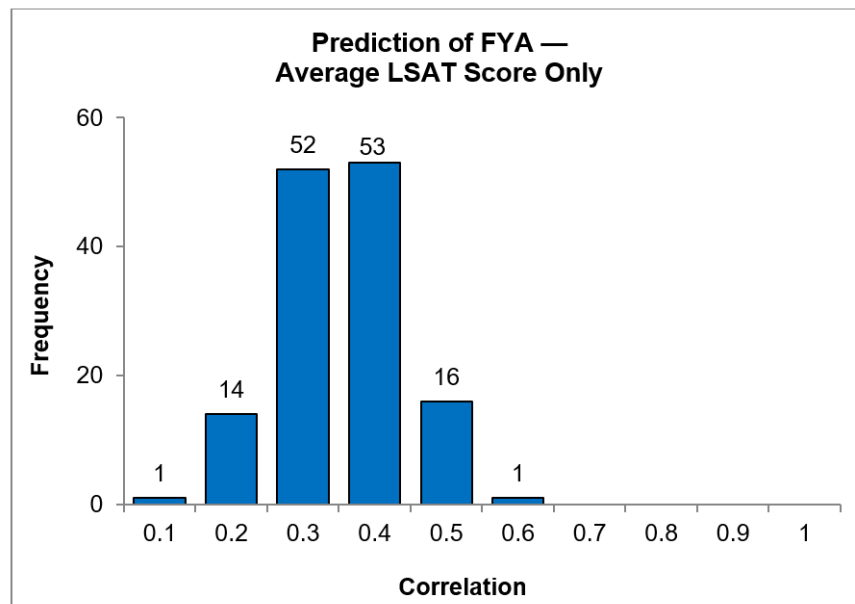


FIGURE 2B-b. Distribution of raw correlation results (average LSAT score only) in the 2023 LSAT Correlation Study: 1 school had a correlation of 0.1; 14 schools had a correlation of 0.2; 52 schools had a correlation of 0.3; 53 schools had a correlation of 0.4; 16 schools had a correlation of 0.5; and 1 school had a correlation of 0.6.

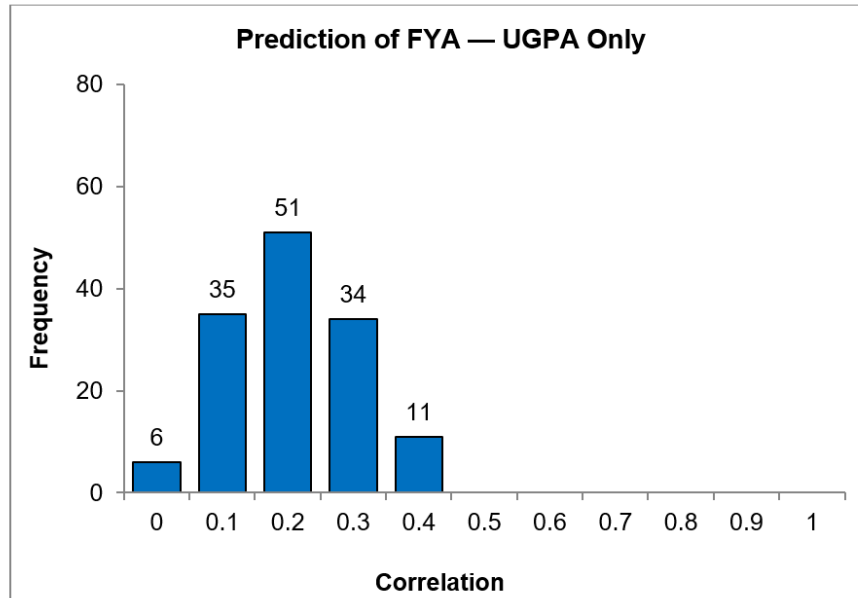


FIGURE 2B-c. Distribution of raw correlation results (UGPA only) in the 2023 LSAT Correlation Study: 6 schools had a correlation near 0; 35 schools had a correlation of 0.1; 51 schools had a correlation of 0.2; 34 schools had a correlation of 0.3; and 11 schools had a correlation of 0.4.

Part 3. Results from the 2022 LSAT Correlation Study

Reports on Correlation of First-Year Performance with LSAT Score and UGPA based on the first-year data for students in the 2021 fall entering class were sent to participating schools in January 2023, after the 2021-2022 first-year grades could be reported and the analyses could be completed. The following tables and figures summarize the results from the 2022 LSAT Correlation Study. For most schools, the study was based on full-time students in the 2019, 2020, and 2021 fall entering classes. Schools that instituted grade-scale changes or that did not participate in all 3 study years may have data representing a different set of entering classes. The findings based on matriculants indicate that the combination of LSAT score and UGPA is usually better at predicting first-year performance than either variable alone. And for the majority of schools, although not all, average LSAT was a better predictor than highest LSAT.

In addition, the study includes results for the school applicant pools and provides a multivariate correction for restriction of range to estimate the correlations of the applicant pool versus the matriculants on which these data are based. The corrected correlation estimates for the applicant pools (Table 3B-b) are higher than the raw correlations for the matriculant group (Table 3B-a). The findings based on the applicant pool also indicate that the combination of LSAT score and UGPA is usually better at predicting first-year performance than either variable alone.

TABLE 3A
Descriptive statistics for full participants in the 2022 LSAT Correlation Study

Statistic	Combined Class Size	Average LSAT	Highest LSAT	UGPA ^a
Total participants	161	161	161	150
Number of schools ^b	150	150	150	150
Mean	482.30	155.35	156.79	3.44
SD	243.80	5.21	5.23	0.17
Minimum	112	143.79	145.87	3.09
Maximum	1,404	169.19	171.16	3.81
25th percentile	322	151.64	153.25	3.32
50th percentile (median)	446	154.39	155.71	3.45
75th percentile	579	158.87	160.21	3.57

^aOnly schools with standard UGPA scale data are included.

^bSummary data are based on schools that met all participation requirements and submitted their data by January 2023.

TABLE 3B-a

Summary of raw Pearson correlations for participants in the 2022 LSAT Correlation Study based on LSAT score

Statistic	LSAT (Average) /FYA	LSAT (Highest)/ FYA	UGPA/ FYA	LSAT (Average) (Highest)/ UGPA	LSAT (Highest)/ UGPA	LSAT (Average) +UGPA/ FYA	LSAT (Highest) +UGPA/ FYA
Mean	0.39	0.35	0.25	-0.02	-0.08	0.47	0.45
SD	0.08	0.09	0.09	0.14	0.15	0.08	0.09
Minimum	0.17	0.12	0.02	-0.34	-0.44	0.26	0.21
Maximum	0.61	0.58	0.45	0.32	0.30	0.65	0.64
25th percentile	0.33	0.29	0.18	-0.13	-0.19	0.41	0.40
50th percentile (median)	0.38	0.35	0.25	-0.02	-0.07	0.47	0.45
75th percentile	0.43	0.41	0.33	0.08	0.03	0.52	0.51

TABLE 3B-b

Summary of corrected correlations for participants in the 2022 LSAT Correlation Study based on LSAT score

Statistic	LSAT (Average) /FYA	LSAT (Highest)/ FYA	UGPA/ FYA	LSAT (Average) /UGPA	LSAT (Highest)/ UGPA	LSAT (Average) +UGPA/ FYA	LSAT (Highest) +UGPA/ FYA
Mean	0.56	0.55	0.40	0.25	0.22	0.62	0.62
SD	0.07	0.07	0.07	0.05	0.05	0.07	0.07
Minimum	0.33	0.33	0.23	0.09	0.08	0.38	0.37
Maximum	0.72	0.70	0.55	0.40	0.38	0.78	0.77
25th percentile	0.52	0.51	0.37	0.22	0.19	0.59	0.58
50th percentile (median)	0.56	0.55	0.41	0.24	0.22	0.63	0.63
75th percentile	0.61	0.59	0.44	0.28	0.25	0.67	0.67

TABLE 3C

Differences in correlation coefficients in the 2022 LSAT Correlation Study (average LSAT score minus highest LSAT score)

Difference Statistic	LSAT+UGPA	LSAT Only
Mean	0.02	0.04
SD	0.02	0.03
Minimum	-0.02	-0.03
Maximum	0.07	0.12
25 th percentile	0.01	0.02
50 th percentile (median)	0.02	0.04
75 th percentile	0.03	0.05

TABLE 3D

Summary of proportional contributions by predictor variable in predictive formulas in the 2022 LSAT Correlation Study

Statistic	LSAT (Average)	UGPA	LSAT (Highest)	UGPA
Mean	60.35	39.65	57.05	42.95
SD	8.12	8.12	8.01	8.01
Minimum	42.24	16.40	35.06	18.75
Maximum	83.60	57.76	81.25	64.94
25th percentile	55.08	33.63	51.73	36.93
50th percentile (median)	60.06	39.95	57.55	42.45
75th percentile	66.37	44.92	63.07	48.27

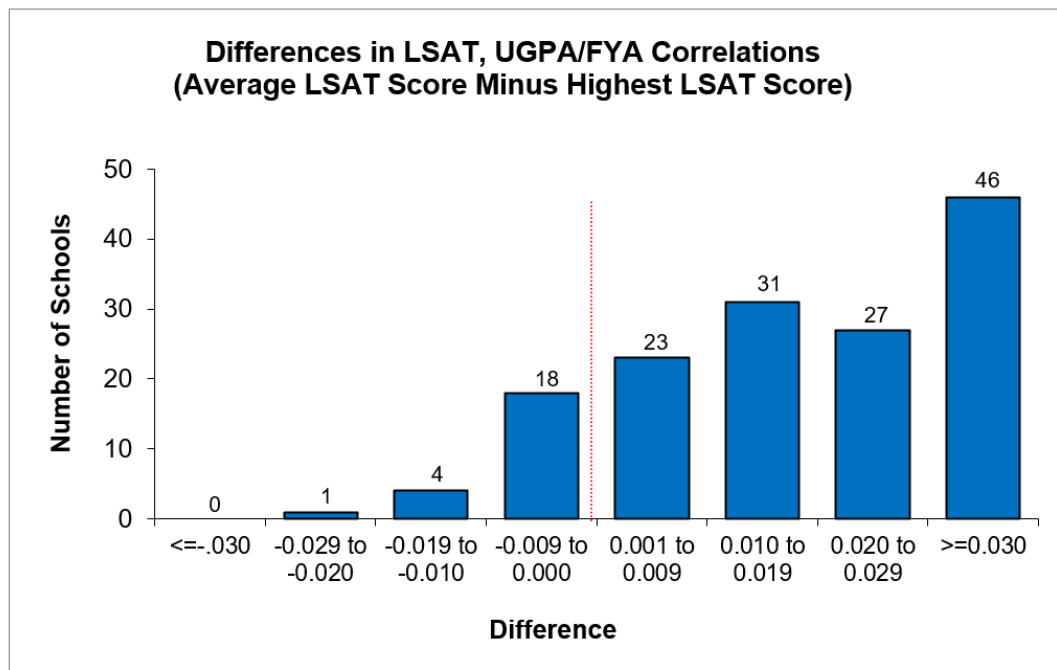


FIGURE 3A. Differences in LSAT+UGPA/FYA correlations (average LSAT score minus highest LSAT score) in the 2022 LSAT Correlation Study: 1 school had a difference of -0.029 to -0.020 ; 4 schools had a difference of -0.019 to -0.010 ; 18 schools had a difference of -0.009 to 0.000 ; 23 schools had a difference of 0.001 to 0.009 ; 31 schools had a difference of 0.010 to 0.019 ; 27 schools had a difference of 0.020 to 0.029 ; and 46 schools had a difference greater than or equal to 0.030 .

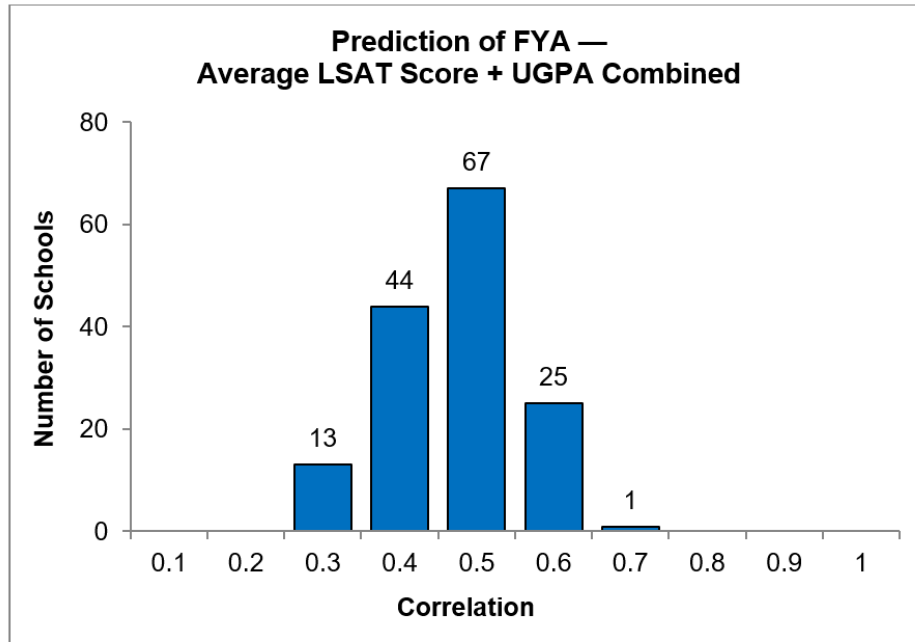


FIGURE 3B-a. Distribution of raw correlation results (average LSAT score + UGPA combined) in the 2022 LSAT Correlation Study: 13 schools had a correlation of 0.3; 44 schools had a correlation of 0.4; 67 schools had a correlation of 0.5; 25 schools had a correlation of 0.6; and 1 school had a correlation of 0.7.

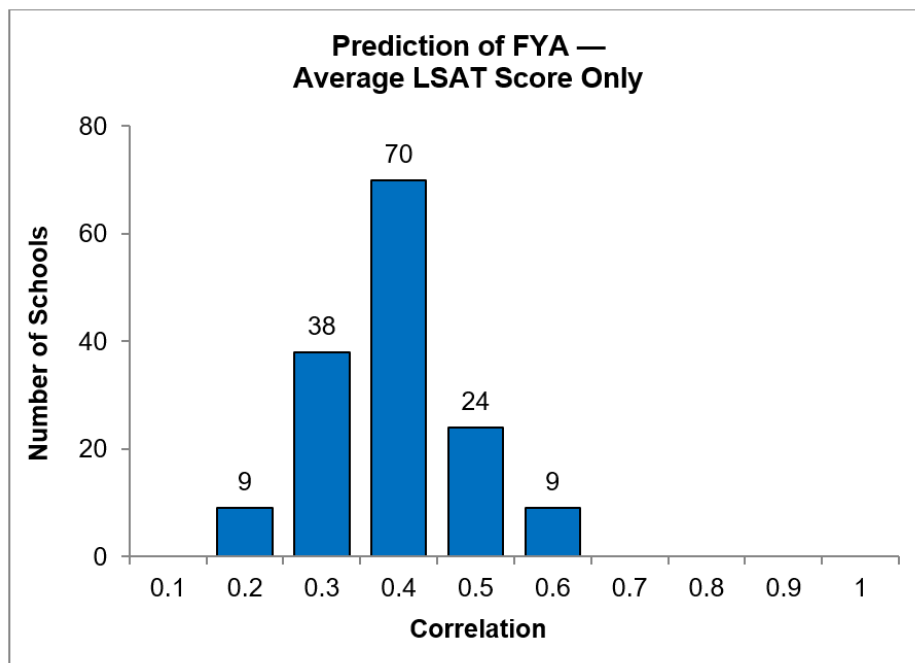


FIGURE 3B-b. Distribution of raw correlation results (average LSAT score only) in the 2022 LSAT Correlation Study: 9 schools had a correlation of 0.2; 38 schools had a correlation of 0.3; 70 schools had a correlation of 0.4; 24 schools had a correlation of 0.5; and 9 schools had a correlation of 0.6.

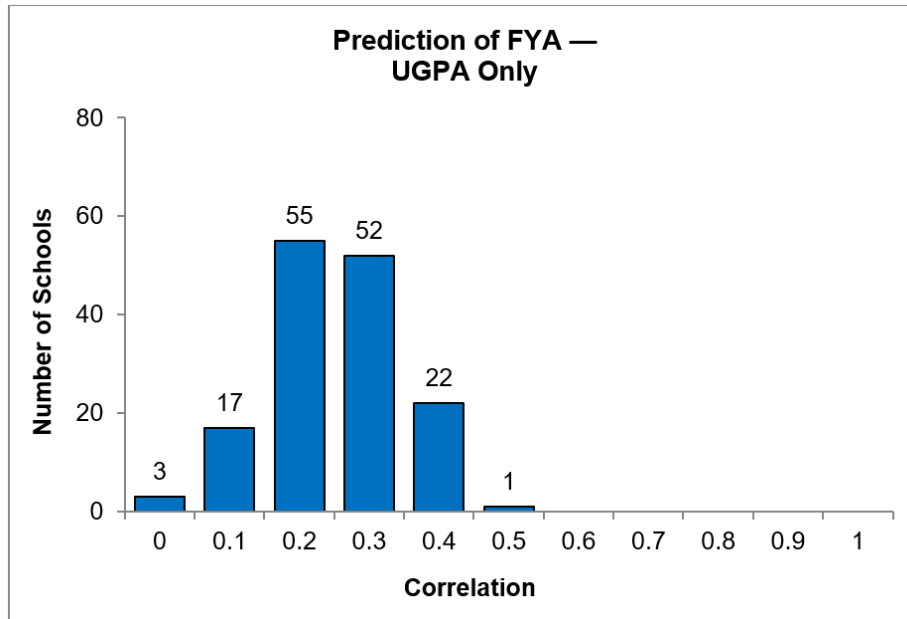


FIGURE 3B-c. Distribution of raw correlation results (UGPA only) in the 2022 LSAT Correlation Study: 3 schools had a correlation near 0; 17 schools had a correlation of 0.1; 55 schools had a correlation of 0.2; 52 schools had a correlation of 0.3; 22 schools had a correlation of 0.4; and 1 school had a correlation of 0.5.

Part 4. Results from the 2021 LSAT Correlation Study

Reports on Correlation of First-Year Performance with LSAT Score and UGPA based on the first-year data for students in the 2020 fall entering class were sent to participating schools in February 2022, after the 2020-2021 first-year grades could be reported and the analyses could be completed. The following tables and figures summarize the results from the 2021 LSAT Correlation Study. For most schools, the study was based on full-time students in the 2018, 2019, and 2020 fall entering classes. Schools that instituted grade-scale changes or that did not participate in all 3 study years may have data representing a different set of entering classes. The findings based on matriculants indicate that the combination of LSAT score and UGPA is usually better at predicting first-year performance than either variable alone. And for the majority of schools, although not all, average LSAT was a better predictor than highest LSAT.

In addition, the study includes results for the school applicant pools and provides a multivariate correction for restriction of range to estimate the correlations of the applicant pool versus the matriculants on which these data are based. The corrected correlation estimates for the applicant pools (Table 4B-b) are higher than the raw correlations for the matriculant group (Table 4B-a). The findings based on the applicant pool also indicate that the combination of LSAT score and UGPA is usually better at predicting first-year performance than either variable alone.

TABLE 4A
Descriptive statistics for full participants in the 2021 LSAT Correlation Study

Statistic	Combined Class Size	Average LSAT	Highest LSAT	UGPA ^a
Total participants	157	157	157	145
Number of schools ^b	145	145	145	145
Mean	444.67	154.46	155.78	3.41
SD	228.90	5.18	5.17	0.18
Minimum	62	143.07	145.00	3.04
Maximum	1,218	168.63	170.45	3.80
25th percentile	285	150.99	152.43	3.27
50th percentile (median)	414	153.38	154.54	3.41
75th percentile	549	158.02	159.30	3.53

^aOnly schools with standard UGPA scale data are included.

^bSummary data are based on schools that met all participation requirements and submitted their data by January 2022.

TABLE 4B-a

Summary of raw Pearson correlations for participants in the 2021 LSAT Correlation Study based on LSAT score

Statistic	LSAT (Average) /FYA	LSAT (Highest)/ FYA	UGPA/ FYA	LSAT (Average) /UGPA	LSAT (Highest)/ UGPA	LSAT (Average) +UGPA/ FYA	LSAT (Highest) +UGPA/ FYA
Mean	0.38	0.35	0.26	-0.04	-0.08	0.48	0.46
SD	0.08	0.08	0.10	0.14	0.15	0.08	0.08
Minimum	0.07	0.11	0.02	-0.38	-0.43	0.22	0.20
Maximum	0.58	0.54	0.59	0.33	0.33	0.67	0.67
25th percentile	0.33	0.31	0.19	-0.12	-0.19	0.43	0.41
50th percentile (median)	0.38	0.34	0.26	-0.04	-0.08	0.48	0.46
75th percentile	0.43	0.40	0.33	0.06	0.02	0.52	0.51

TABLE 4B-b

Summary of corrected correlations for participants in the 2021 LSAT Correlation Study based on LSAT score

Statistic	LSAT (Average) /FYA	LSAT (Highest)/ FYA	UGPA/ FYA	LSAT (Average) /UGPA	LSAT (Highest) /UGPA	LSAT (Average) +UGPA/ FYA	LSAT (Highest) +UGPA/ FYA
Mean	0.57	0.56	0.42	0.25	0.23	0.64	0.64
SD	0.07	0.07	0.07	0.05	0.05	0.07	0.07
Minimum	0.29	0.29	0.21	0.09	0.08	0.34	0.34
Maximum	0.71	0.7	0.63	0.39	0.37	0.79	0.78
25th percentile	0.53	0.52	0.38	0.22	0.19	0.61	0.61
50th percentile (median)	0.57	0.56	0.42	0.25	0.23	0.65	0.64
75th percentile	0.62	0.61	0.46	0.28	0.26	0.68	0.68

TABLE 4C

Differences in correlation coefficients in the 2021 LSAT Correlation Study (average LSAT score minus highest LSAT score)

Difference Statistic	LSAT+UGPA	LSAT Only
Mean	0.02	0.03
SD	0.02	0.02
Minimum	-0.03	-0.04
Maximum	0.07	0.12
25 th percentile	0.01	0.02
50 th percentile (median)	0.02	0.03
75 th percentile	0.03	0.05

TABLE 4D

Summary of proportional contributions by predictor variable in predictive formulas in the 2021 LSAT Correlation Study

Statistic	LSAT (Average)	UGPA	LSAT (Highest)	UGPA
Mean	58.52	41.48	55.77	44.32
SD	8.36	8.36	7.91	7.91
Minimum	29.94	18.05	33.23	25.02
Maximum	81.95	70.06	74.98	66.77
25th percentile	53.01	36.06	50.81	39.15
50th percentile (median)	59.01	40.99	56.23	43.77
75th percentile	63.94	46.99	60.85	49.19

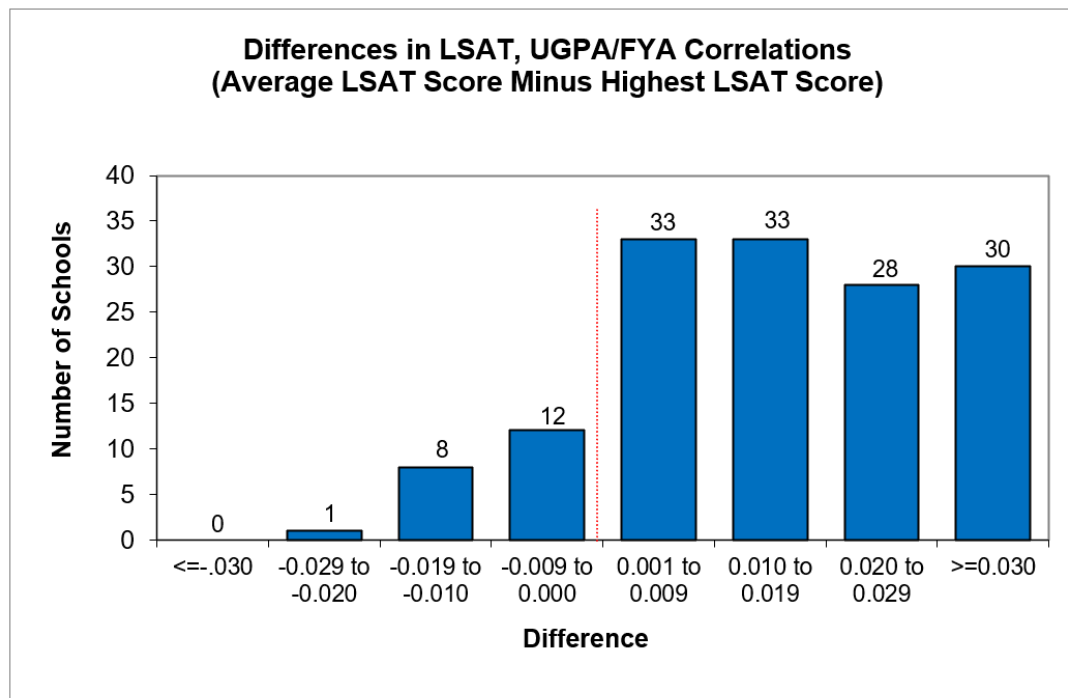


FIGURE 4A. Differences in LSAT+UGPA/FYA correlations (average LSAT score minus highest LSAT score) in the 2021 LSAT Correlation Study: 1 school had a difference of -0.029 to -0.020 ; 8 schools had a difference of -0.019 to -0.010 ; 12 schools had a difference of -0.009 to 0.000 ; 33 schools had a difference of 0.001 to 0.009 ; 33 schools had a difference of 0.010 to 0.019 ; 28 schools had a difference of 0.020 to 0.029 ; and 30 schools had a difference greater than or equal to 0.030 .

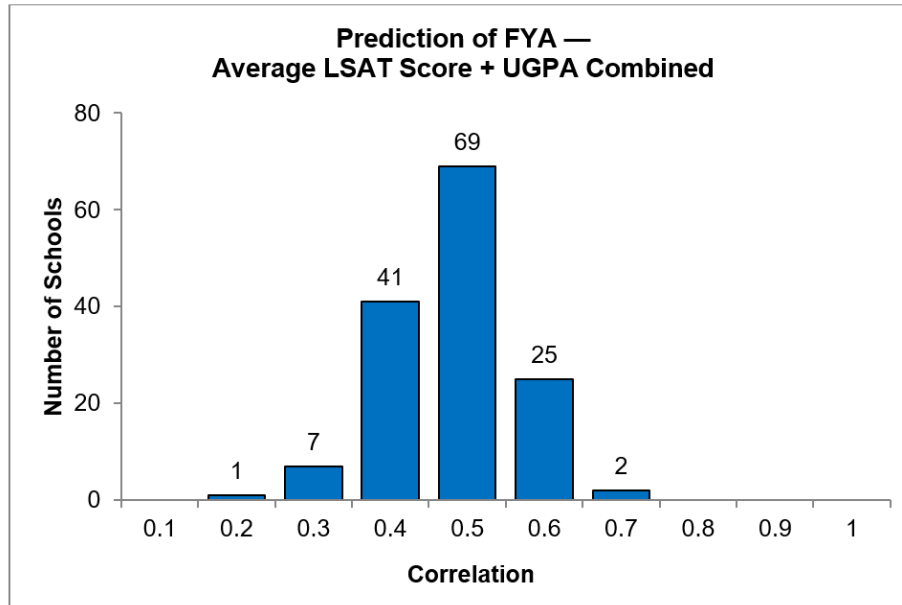


FIGURE 4B-a. Distribution of raw correlation results (average LSAT score + UGPA combined) in the 2021 LSAT Correlation Study: 1 school had a correlation of 0.2; 7 schools had a correlation of 0.3; 41 schools had a correlation of 0.4; 69 schools had a correlation of 0.5; 25 schools had a correlation of 0.6; and 2 schools had a correlation of 0.7.

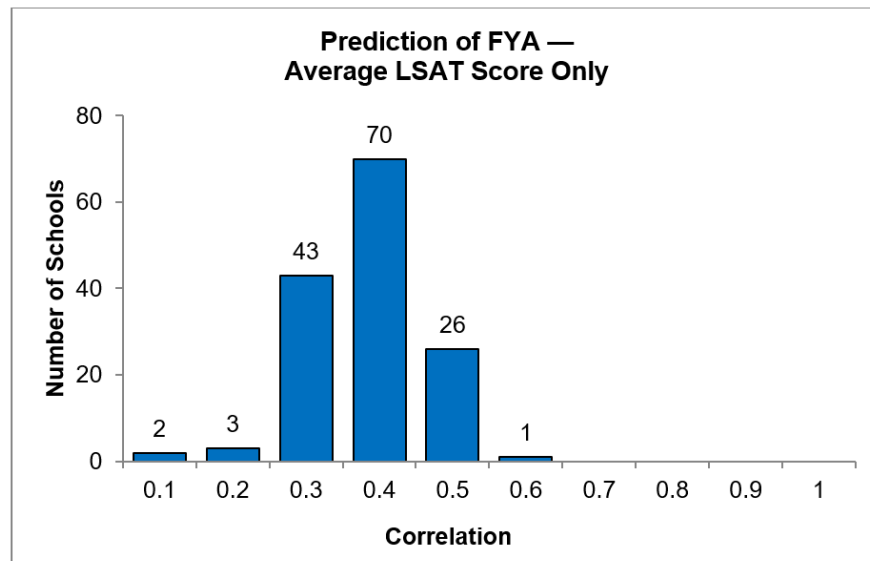


FIGURE 4B-b. Distribution of raw correlation results (average LSAT score only) in the 2021 LSAT Correlation Study: 2 schools had a correlation of 0.1; 3 schools had a correlation of 0.2; 43 schools had a correlation of 0.3; 70 schools had a correlation of 0.4; 26 schools had a correlation of 0.5; and 1 school had a correlation of 0.6.

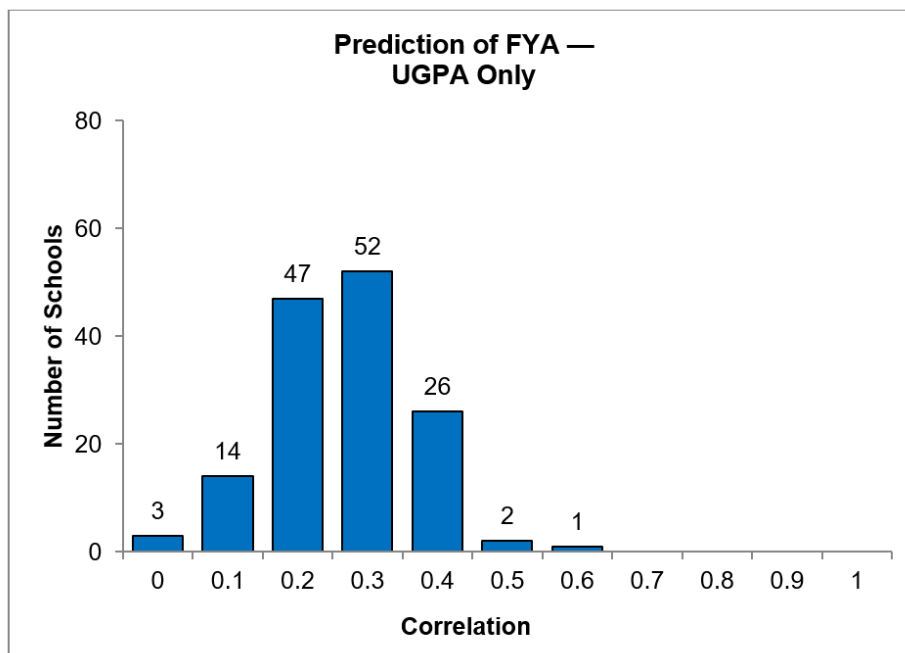


FIGURE 4B-c. Distribution of raw correlation results (UGPA only) in the 2021 LSAT Correlation Study: 3 schools had a correlation near 0; 14 schools had a correlation of 0.1; 47 schools had a correlation of 0.2; 52 schools had a correlation of 0.3; 26 schools had a correlation of 0.4; 2 schools had a correlation of 0.5; and 1 school had a correlation of 0.6.

Part 5. Results from the 2020 LSAT Correlation Study

Reports on Correlation of First-Year Performance with LSAT Score and UGPA based on the first-year data for students in the 2019 fall entering class were sent to participating schools in February 2021, after the 2019-2020 first-year grades could be reported and the analyses could be completed. The following tables and figures summarize the results from the 2020 LSAT Correlation Study. For most schools, the study was based on full-time students in the 2017, 2018, and 2019 fall entering classes. Schools that instituted grade-scale changes or that did not participate in all 3 study years may have data representing a different set of entering classes. The findings based on matriculants indicate that the combination of LSAT score and UGPA is usually better at predicting first-year performance than either variable alone. And for the majority of schools, although not all, average LSAT was a better predictor than highest LSAT.

In addition, the study includes results for the school applicant pools and provides a multivariate correction for restriction of range to estimate the correlations of the applicant pool versus the matriculants on which these data are based. The corrected correlation estimates for the applicant pools (Table 5B-b) are higher than the raw correlations for the matriculant group (Table 5B-a). The findings based on the applicant pool also indicate that the combination of LSAT score and UGPA is usually better at predicting first-year performance than either variable alone.

TABLE 5A
Descriptive statistics for matriculants in the 2020 LSAT Correlation Study

Statistic	Combined Class Size	Average LSAT	Highest LSAT	UGPA ^a
Total participants	151	151	151	143
Number of schools ^b	143	143	143	141
Mean	460.97	154.39	155.61	3.39
SD	225.57	5.48	5.48	0.18
Minimum	111	142.74	144.31	3.00
Maximum	1,231	168.52	170.11	3.84
25th percentile	295	150.39	151.53	3.26
50th percentile (median)	438	153.63	154.40	3.38
75th percentile	570	158.60	159.75	3.52

^aOnly schools with standard UGPA scale data are included.

^bSummary data are based on schools that met all participation requirements and submitted their data by February 2021.

TABLE 5B-a

Summary of raw Pearson correlations in the 2020 LSAT Correlation Study based on LSAT score

Statistic	LSAT (Average)/ FYA	LSAT (Highest)/ FYA	UGPA/ FYA	LSAT (Average)/ UGPA	LSAT (Highest)/ UGPA	LSAT (Average) +UGPA/ FYA	LSAT (Highest) +UGPA/ FYA
Mean	0.40	0.36	0.25	-0.05	-0.09	0.49	0.47
SD	0.08	0.09	0.10	0.15	0.15	0.08	0.08
Minimum	0.20	0.15	0.01	-0.48	-0.54	0.28	0.22
Maximum	0.61	0.59	0.46	0.30	0.28	0.68	0.67
25th percentile	0.34	0.31	0.19	-0.14	-0.18	0.44	0.41
50th percentile (median)	0.40	0.36	0.26	-0.04	-0.09	0.48	0.47
75th percentile	0.45	0.42	0.32	0.04	0.02	0.54	0.53

TABLE 5B-b

Summary of corrected correlations in the 2020 LSAT Correlation Study based on LSAT score

Statistic	LSAT (Average) /FYA	LSAT (Highest)/ FYA	UGPA/ FYA	LSAT (Average) /UGPA	LSAT (Highest)/ UGPA	LSAT (Average) +UGPA/ FYA	LSAT (Highest) +UGPA/ FYA
Mean	0.59	0.58	0.41	0.25	0.23	0.65	0.65
SD	0.07	0.07	0.06	0.05	0.05	0.06	0.07
Minimum	0.36	0.21	0.24	0.13	0.12	0.42	0.24
Maximum	0.76	0.77	0.59	0.44	0.42	0.81	0.82
25th percentile	0.55	0.53	0.37	0.21	0.20	0.62	0.61
50th percentile (median)	0.60	0.58	0.41	0.25	0.23	0.66	0.66
75th percentile	0.64	0.63	0.46	0.28	0.26	0.69	0.69

TABLE 5C

Differences in correlation coefficients in the 2020 LSAT Correlation Study (average LSAT score minus highest LSAT score)

Difference Statistic	LSAT+UGPA	LSAT Only
Mean	0.02	0.04
SD	0.03	0.03
Minimum	-0.02	-0.02
Maximum	0.24	0.20
25 th percentile	0.01	0.03
50 th percentile (median)	0.02	0.03
75 th percentile	0.03	0.05

TABLE 5D

Summary of proportional contributions by predictor variable in predictive formulas in the 2020 LSAT Correlation Study

Statistic	LSAT (Average)	UGPA	LSAT (Highest)	UGPA
Mean	60.12	39.88	57.58	42.42
SD	7.33	7.33	7.38	7.38
Minimum	40.94	19.37	37.59	21.20
Maximum	80.63	59.06	78.8	62.41
25th percentile	56.31	34.68	53.57	37.18
50th percentile (median)	59.93	40.07	57.28	42.72
75th percentile	65.32	43.69	62.82	46.43

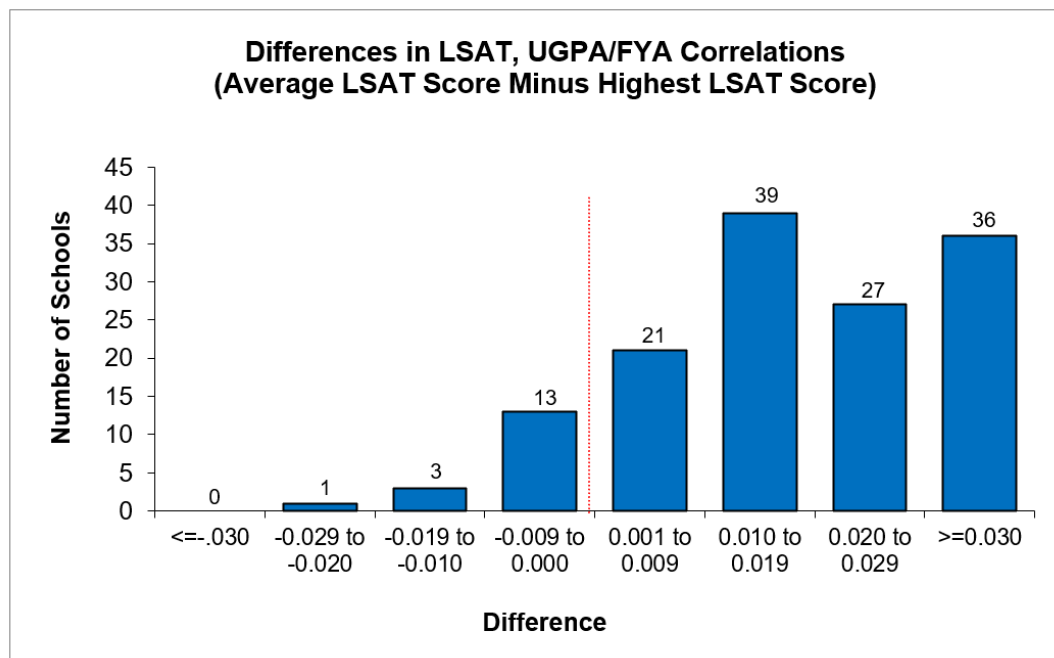


FIGURE 5A. Differences in LSAT+UGPA/FYA correlations (average LSAT score minus highest LSAT score) in the 2020 LSAT Correlation Study: 1 school had a difference of -0.029 to -0.020 ; 3 schools had a difference of -0.019 to -0.010 ; 13 schools had a difference of -0.009 to 0.000 ; 21 schools had a difference of 0.001 to 0.009 ; 39 schools had a difference of 0.010 to 0.019 ; 27 schools had a difference of 0.020 to 0.029 ; and 36 schools had a difference greater than or equal to 0.030 .

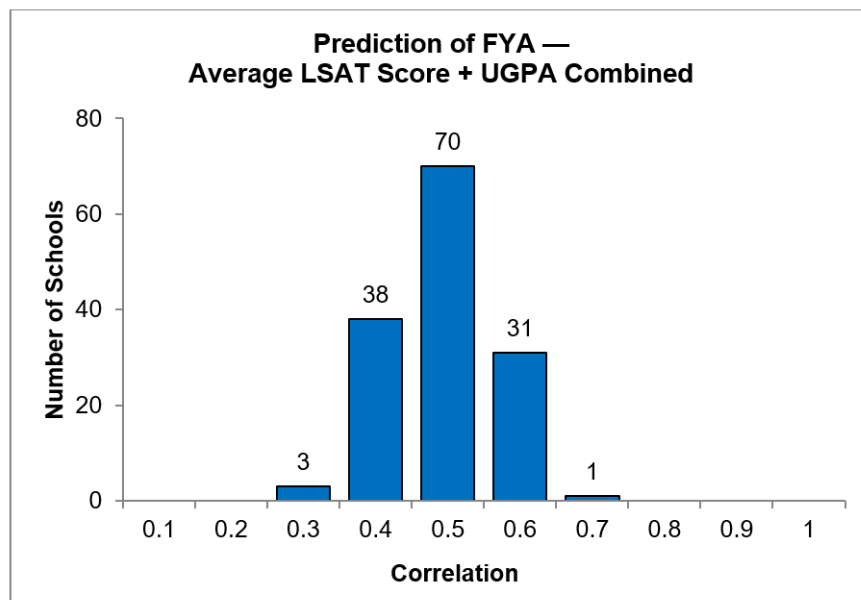


FIGURE 5B-a. Distribution of raw correlation results (average LSAT score + UGPA combined) in the 2020 LSAT Correlation Study: 3 schools had a correlation of 0.3; 38 schools had a correlation of 0.4; 70 schools had a correlation of 0.5; 31 schools had a correlation of 0.6; and 1 school had a correlation of 0.7.

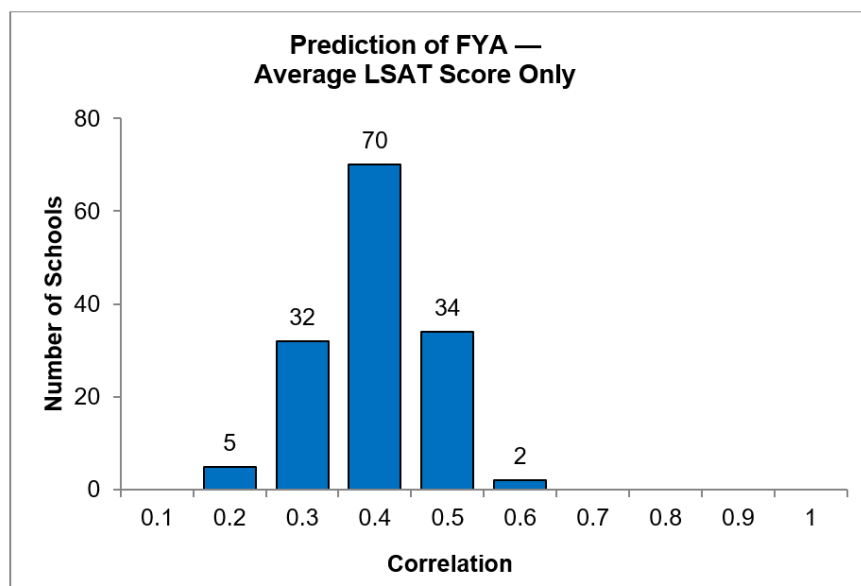


FIGURE 5B-b. Distribution of raw correlation results (average LSAT score only) in the 2020 LSAT Correlation Study: 5 schools had a correlation of 0.2; 32 schools had a correlation of 0.3; 70 schools had a correlation of 0.4; 34 schools had a correlation of 0.5; and 2 schools had a correlation of 0.6.

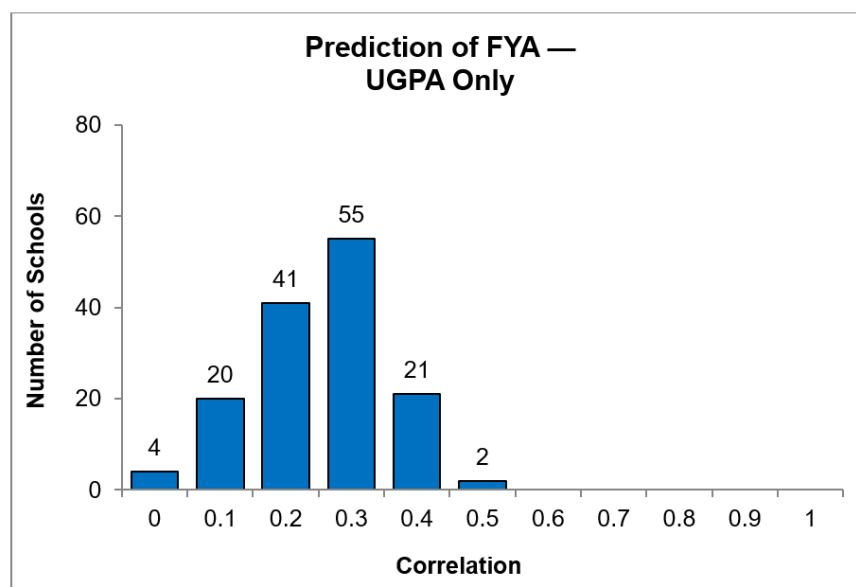


FIGURE 5B-c. Distribution of raw correlation results (UGPA only) in the 2020 LSAT Correlation Study: 4 schools had a correlation near 0; 20 schools had a correlation of 0.1; 41 schools had a correlation of 0.2; 55 schools had a correlation of 0.3; 21 schools had a correlation of 0.4; and 2 schools had a correlation of 0.5.