

Summary of 2017, 2018, and 2019 LSAT Correlation Study Results

Part 1. Results From 2017 LSAT Correlation Study

The annual LSAT Correlation Studies provide important information about the predictive validity of LSAT scores and undergraduate grade point averages (UGPAs) at each law school and their relationship to their students' first-year law school grades. Previous LSAT Correlation Studies have confirmed that LSAT score is a good predictor of first-year law school performance. The findings have also verified that the combination of LSAT score and UGPA is usually better at predicting first-year performance than either factor alone.

From August 2017 through June 2018, 180 law schools participated in the 2017 cycle of the First-Year Performance/LSAT and UGPA Correlation Studies. The number of participants continued to be at the lower levels experienced since the inception of disclosure agreements in 2012.

For most schools, the study was based on full-time students in the 2014, 2015, and 2016 fall-entering classes. Schools that instituted grade scale changes in 2015 or 2016, or those that did not participate in all 3 study years, may have data representing a different set of entering classes.

The results for 171 ABA-approved schools and 9 Canadian schools are summarized in the tables and figures that follow (**Table 1.1, Figure 1.1**). Seven schools are omitted from the rest of the summary for the following reasons: insufficient combined class size, atypical score distributions or evidence of preselection effects, or a preference to be excluded from the summary.

In addition to the standard analysis, the study includes results for the school applicant pools and provides a multivariate correction for restriction of range. The corrected correlation estimates for the applicant pools (**Tables 1.3c and 1.3d**) are higher than the raw correlations for the matriculant group (**Tables 1.3a and 1.3b**) and should give a better assessment of the predictive validity of LSAT score and UGPA.

Although the outcomes for individual schools may have fluctuated from those obtained last year, the summary results are similar for these entering classes. For the fifth year in a row, the mean of the average LSAT scores for these matriculants has declined. While score variation was greater over this 3-year study period than in years prior to 2015, it leveled off for the 2016 and 2017 cycles (**Figures 1.3 and 1.4**). The mean correlations of first-year average (FYA) with LSAT score remained stable (**Table 1.5, Figure 1.6**). Correlations of FYA with LSAT score alone and with the combined predictors are the highest in recent years.

In recognition of ABA reporting requirements, a second report based on highest LSAT score was produced for each school. For 130 (75%) of the schools, average LSAT score was a better predictor than highest LSAT score (**Figure 1.5**), although the difference was slight. This summary focuses on results obtained by using average LSAT score. For comparison purposes, results based on highest LSAT score are reported in **Tables 1.2, 1.3b, 1.3d, 1.4, and 1.6**.

Table 1.1
2017 Correlation Study Participants

Type of School	Number of Participants	Number of Full Participants
ABA Approved	171	165
Non-ABA Approved	0	0
Canadian	9	8
International	0	0
Total	180	173

Figure 1.1
Trends in Correlation Study Participation

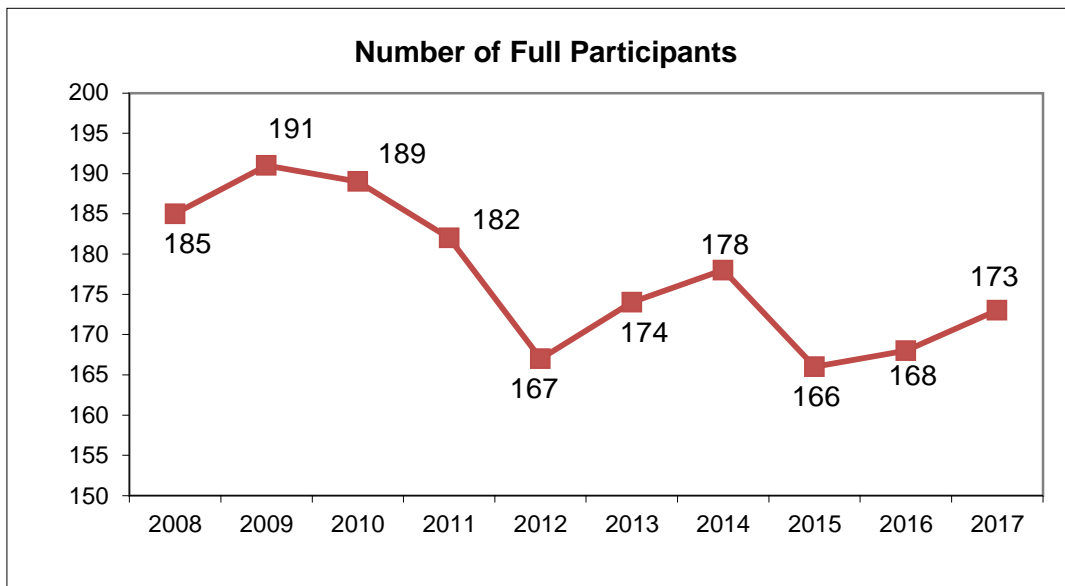


Table 1.2

Descriptive Statistics for Full Participants in the 2017 LSAT Correlation Studies

Statistic	Variable			
	Combined Class Size	Average LSAT	Highest LSAT	UGPA*
Number of Schools	173	173	173	168
Mean	399.38	154.18	155.22	3.34
Standard Deviation	181.93	5.59	5.61	0.20
Range				
Minimum	35	143.17	144.56	2.84
Maximum	922	168.94	170.27	3.84
Percentiles				
25th	272	150.22	151.19	3.21
50th (median)	367	153.77	154.79	3.35
75th	527	157.64	158.85	3.47

* Only schools with standard UGPA scale data are included.

Figure 1.2

Trends in Mean Combined First-Year Class Size

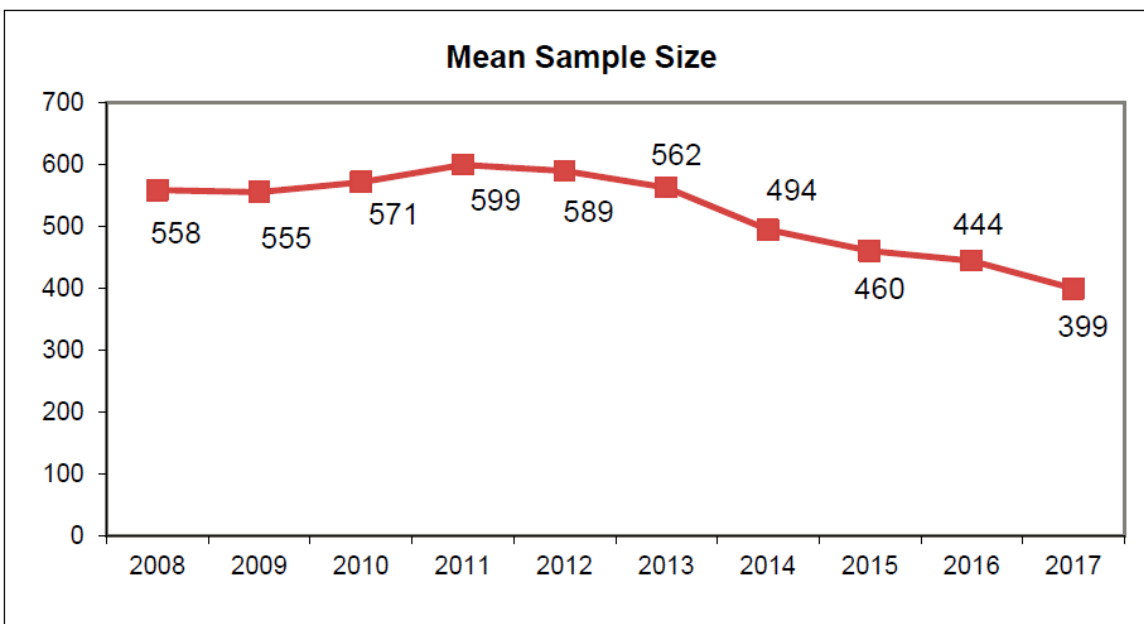


Figure 1.3
Mean LSAT Score for Combined First-Year Classes

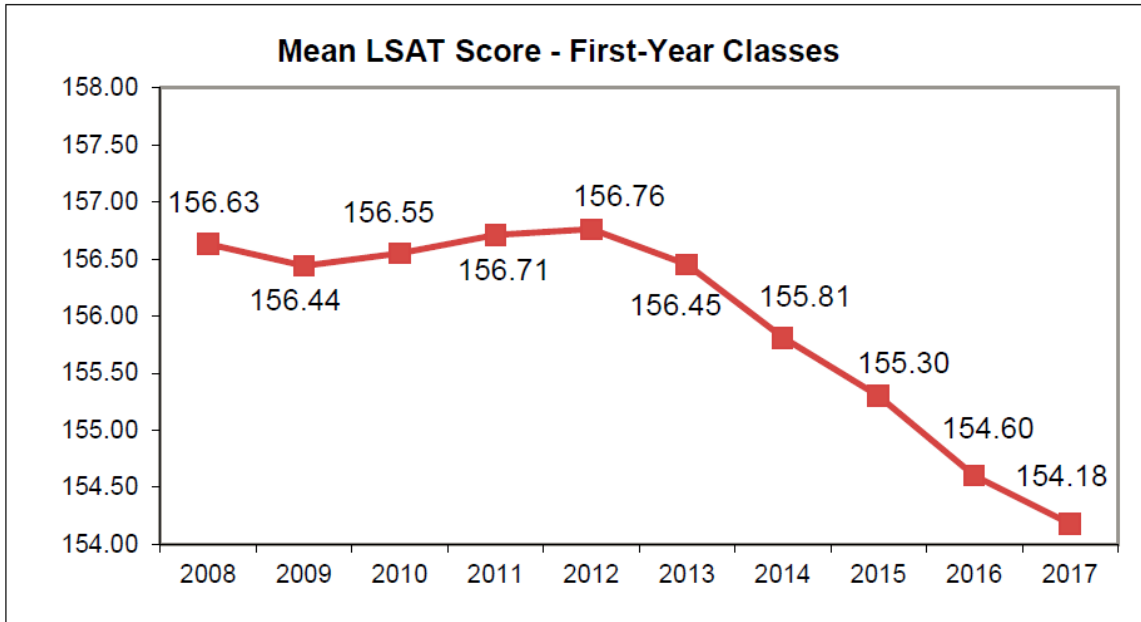


Figure 1.4
Mean LSAT Standard Deviation for Combined First-Year Classes

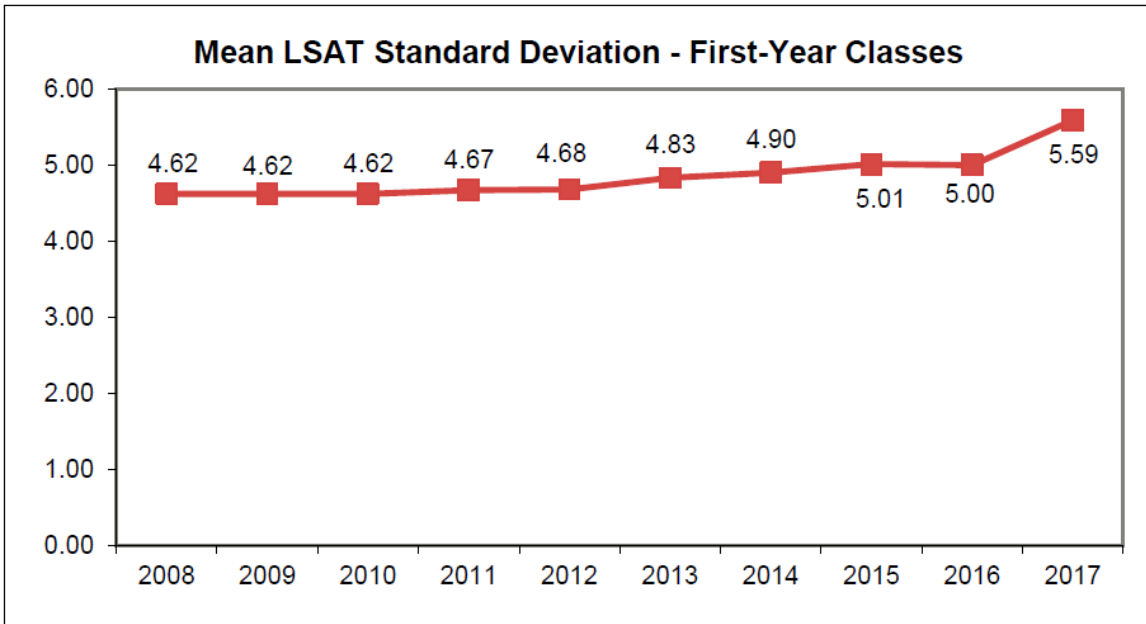


Table 1.3a
Summary Correlations for Full Participants
in the 2017 LSAT Correlation Studies Based on Average LSAT Score

Statistics	Correlations			
	LSAT/FYA	UGPA/FYA	LSAT/UGPA	LSAT+UGPA/FYA
Mean	0.41	0.27	-0.04	0.50
Standard Deviation	0.09	0.10	0.15	0.08
Range				
Minimum	0.12	-0.03	-0.47	0.25
Maximum	0.66	0.48	0.36	0.72
Percentiles				
25th	0.36	0.20	-0.13	0.45
50th (median)	0.41	0.27	-0.04	0.51
75th	0.47	0.34	0.06	0.56

Table 1.3b
Summary Correlations for Full Participants
in the 2017 LSAT Correlation Studies Based on Highest LSAT Score

Statistics	Correlations			
	LSAT/FYA	UGPA/FYA	LSAT/UGPA	LSAT+UGPA/FYA
Mean	0.38	0.27	-0.08	0.49
Standard Deviation	0.09	0.10	0.16	0.08
Range				
Minimum	0.10	-0.03	-0.54	0.24
Maximum	0.64	0.48	0.29	0.71
Percentiles				
25th	0.33	0.20	-0.18	0.43
50th (median)	0.39	0.27	-0.07	0.49
75th	0.44	0.34	0.04	0.55

Table 1.3c
Summary of Corrected Correlations for Full Participants
in the 2017 LSAT Correlation Studies Based on Average LSAT Score

Statistics	Correlations			
	LSAT/FYA	UGPA/FYA	LSAT/UGPA	LSAT+UGPA/FYA
Mean	0.61	0.43	0.27	0.67
Standard Deviation	0.07	0.06	0.05	0.06
Range				
Minimum	0.25	0.26	0.13	0.34
Maximum	0.76	0.57	0.46	0.80
Percentiles				
25th	0.58	0.39	0.24	0.64
50th (median)	0.61	0.44	0.27	0.68
75th	0.66	0.48	0.30	0.71

Table 1.3d
Summary of Corrected Correlations for Full Participants
in the 2017 LSAT Correlation Studies Based on Highest LSAT Score

Statistics	Correlations			
	LSAT/FYA	UGPA/FYA	LSAT/UGPA	LSAT+UGPA/FYA
Mean	0.60	0.43	0.26	0.67
Standard Deviation	0.07	0.07	0.05	0.07
Range				
Minimum	0.24	0.25	0.11	0.37
Maximum	0.76	0.58	0.45	0.81
Percentiles				
25th	0.57	0.39	0.23	0.65
50th (median)	0.61	0.45	0.25	0.68
75 th	0.65	0.48	0.29	0.71

Figure 1.5
Differences in LSAT, UGPA/FYA Correlations

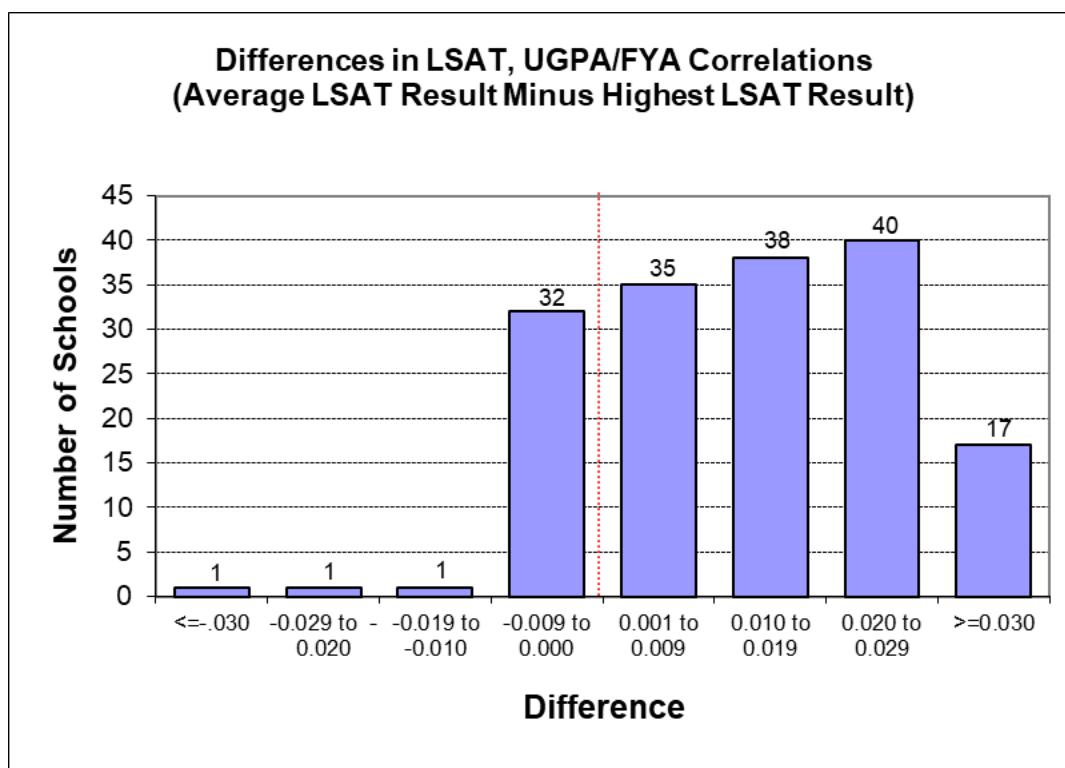
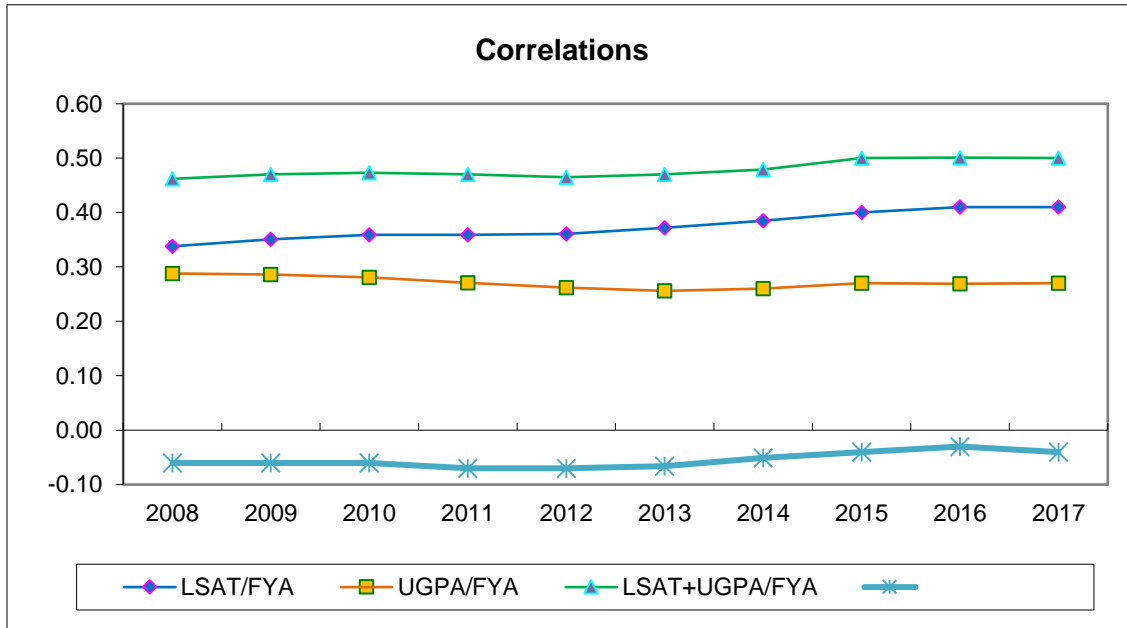


Table 1.4
Differences in Correlation Coefficients
(Average LSAT Score Minus Highest LSAT Score)

Difference Statistic	Prediction Model	
	LSAT+UGPA	LSAT Only
Mean	0.01	0.03
Standard Deviation	0.01	0.02
Range		
Minimum	-0.03	-0.03
Maximum	0.07	0.08
Percentages		
25th	0.00	0.01
50th (median)	0.01	0.03
75th	0.02	0.04

Figure 1.6
Trends in Correlation Results*



* Using average LSAT score

Table 1.5
Trends in Correlation Results*

	2008	2009	2010	2011	2012	2013	2014	2015	2016	2017
LSAT/FYA	0.34	0.35	0.36	0.36	0.36	0.37	0.39	0.40	0.41	0.41
UGPA/FYA	0.29	0.29	0.28	0.27	0.26	0.26	0.26	0.27	0.27	0.27
LSAT/UGPA	-0.06	-0.06	-0.06	-0.07	-0.07	-0.07	-0.05	-0.04	-0.03	-0.04
LSAT+UGPA/FYA	0.46	0.47	0.47	0.47	0.47	0.47	0.48	0.50	0.50	0.50

* Using average LSAT score

Figure 1.7
Stem and Leaf Plots for Prediction of FYA

Average LSAT and UGPA Combined Stem Leaf	#
7 02	2
6 67	2
6 000001122233444	15
5 5555555666666777777777788888899	35
5 0000000000000001111111111222222222222222333444	50
4 55555556666777777788999999	29
4 000011122222333333444444	26
3 667899999	9
3 334	3
2 56	2
2	0
1	0
1	0
0	0
0	0

Average LSAT Only Stem Leaf	#
6 6	1
6 03	2
5 55666678	8
5 0000001111122223444	20
4 55555566666777777777888899	29
4 00000111111111122222222222233333444444	42
3 5555556666677777778888899999999	35
3 00111222222233344444	20
2 5777888999	10
2 123	3
1 58	2
1 2	1
0	0
0	0

UGPA Only Stem Leaf	#
5	0
4 588	3
4 01111244444	11
3 55555556666666678888999	25
3 0000111122222233333333444444	30
2 55555666666666777788888999999	33
2 0000111122222233333344444444	30
1 55666777888888999	18
1 001222233344444	15
0 57899	6
0 4	1
0 3	1

Note: Multiply Stem Leaf by 0.1

Table 1.6**Summary of Proportional Contributions by Predictor Variable in Predictive Formula**

Statistic	Average LSAT Score		Highest LSAT Score	
	LSAT	UGPA	LSAT	UGPA
Mean	59.79	40.21	57.61	42.39
Standard Deviation	7.63	7.63	7.87	7.87
Range				
Minimum	26.75	21.18	19.82	23.90
Maximum	78.82	73.25	76.10	80.18
Percentiles				
25th	54.75	35.24	52.77	37.63
50th (median)	59.62	40.38	57.77	42.23
75th	64.76	45.25	62.37	47.23

Table 1.7**Changes in Correlation Coefficients from 2016 to 2017 for Predictors of First-Year Average***

Difference Statistic	Prediction Model		
	Average LSAT Score + UGPA	Average LSAT Score Only	UGPA Only
Mean	0.00	0.00	0.00
Standard Deviation	0.04	0.04	0.05
Range			
Minimum	-0.11	-0.15	-0.11
Maximum	0.16	0.21	0.15
Percentages			
25th	-0.03	-0.03	-0.03
50th (median)	0.00	0.00	0.00
75th	0.02	0.03	0.03

* The 2017 result less the 2016 result, based on the 160 schools who participated in both years

Figure 1.8

Stem and Leaf Plots of Changes in Correlation Coefficients from 2016 to 2017

Average LSAT and UGPA Combined		#
Stem Leaf		
16	4	1
14	1	1
12		0
10	1	1
8		0
6	05655	5
4	00134456788886	14
2	001124478900001233399	21
0	0000112333566677790011222233344445688888	40
-0	9977664422111008877654444211	28
-2	9887655422100888766542200	25
-4	6543222075543321	16
-6	8530	4
-8	86	2
-10	40	2
-12		0
Average LSAT Only		#
Stem Leaf		
20	5	1
18		0
16		0
14	0	1
12		0
10	7	1
8	12	2
6	155	3
4	001234457800023599	18
2	00112246677888011224468	23
0	122334578890000244455566889	27
-0	7744433221198777654444332211	28
-2	9966666544321110098755433222100	31
-4	7543206555310000	16
-6	0050	4
-8	54	2
-10	21	2
-12		0
-14	6	1

Note: Multiply Stem Leaf by 0.01.

Figure 1.8 (continued)

Stem and Leaf Plots of Changes in Correlation Coefficients from 2016 to 2017

UGPA Only Stem Leaf	#
14 8	1
12	0
10 016	3
8 77837	5
6 23679	5
4 3578890367889	13
2 011113445566688899233567	24
0 0111333345902333456667889	25
-0 98776554222110966555443221	26
-2 88775433308877766655532221	26
-4 8643200966443310	16
-6 0995440	7
-8 63099530	8
-10 9	1
-12	0

Note: Multiply Stem Leaf by 0.01

Part 2. Results From 2018 LSAT Correlation Study

The annual LSAT Correlation Studies provide important information about the predictive validity of LSAT scores and undergraduate grade point averages (UGPAs) at each law school and their relationship to their students' first-year law school grades. Previous LSAT Correlation Studies have confirmed that LSAT score is a good predictor of first-year law school performance. The findings have also verified that the combination of LSAT score and UGPA is usually better at predicting first-year performance than either factor alone.

From August 2018 through May 2019, 179 law schools participated in the 2018 cycle of the First-Year Performance/LSAT and UGPA Correlation Studies. The number of participants continued to be at the lower levels experienced since the inception of disclosure agreements in 2012.

For most schools, the study was based on full-time students in the 2015, 2016, and 2017 fall-entering classes. Schools that instituted grade scale changes in 2016 or 2017, or those that did not participate in all 3 study years, may have data representing a different set of entering classes. Data for the fall 2017 entering class were combined with the data for up to two previous entering classes, as available, to update the validity analysis for each school.

The results for 171 ABA-approved schools, 1 non-ABA-approved school, and 7 Canadian schools are summarized in the tables and figures that follow (**Table 2.1, Figure 2.1**). Six schools are omitted from the rest of the summary for the following reasons: insufficient combined class size, atypical score distributions or evidence of preselection effects, or a preference to be excluded from the summary.

In addition to the standard analysis, the study includes results for the school applicant pools and provides a multivariate correction for restriction of range. The corrected correlation estimates for the applicant pools (**Table 2.2b**) are higher than the raw correlations for the matriculant group (**Table 2.2a**) and should give a better assessment of the predictive validity of LSAT score and UGPA.

Although the outcomes for individual schools may have fluctuated from those obtained last year, the summary results are similar for these entering classes. For the sixth year in a row, the mean of the average LSAT scores for these matriculants has declined. Score variation declined to levels similar to those observed in the 2014 cycle (**Figures 2.3 and 2.4**). The mean correlations of first-year average (FYA) with LSAT score remained stable (**Table 2.4, Figure 2.6**). Correlations of FYA with LSAT score alone and with the combined predictors have remained steady since the 2015 cycle.

In recognition of ABA reporting requirements, a second report based on highest LSAT score was produced for each school. For 143 (86%) of the schools, average LSAT score was a better predictor than highest LSAT score (**Figure 2.5**), although the difference was slight. This summary focuses on results obtained by using average LSAT score.

Table 2.1**Descriptive Statistics for Full Participants in the 2018 LSAT Correlation Studies**

Statistic	Variable			
	Combined Class Size	Average LSAT	Highest LSAT	UGPA*
Number of Schools	172	172	172	169
Mean	420.48	153.99	155.03	3.35
Standard Deviation	210.27	5.36	5.38	0.20
Range				
Minimum	30	142.84	144.25	2.86
Maximum	1,251	168.47	169.79	3.83
Percentiles				
25th	274	150.32	151.44	3.22
50th (median)	390	153.39	154.32	3.36
75th	540	157.55	158.65	3.48

* Only schools with standard UGPA scale data are included.

Figure 2.1
Trends in Correlation Studies Participation

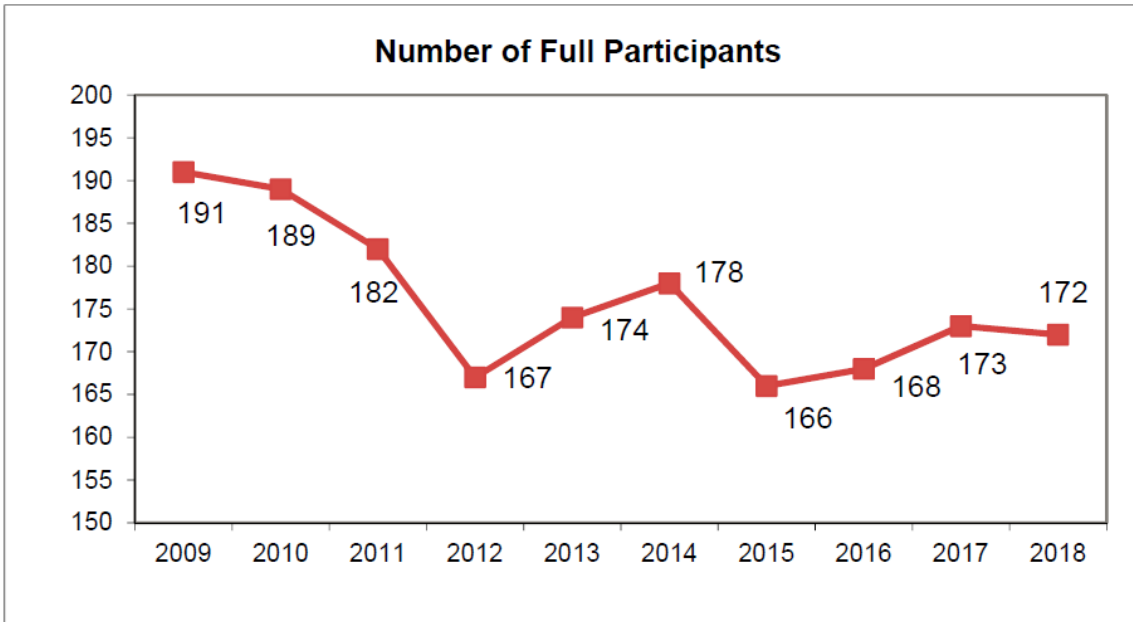


Figure 2.2
Trends in Mean Combined Class Size

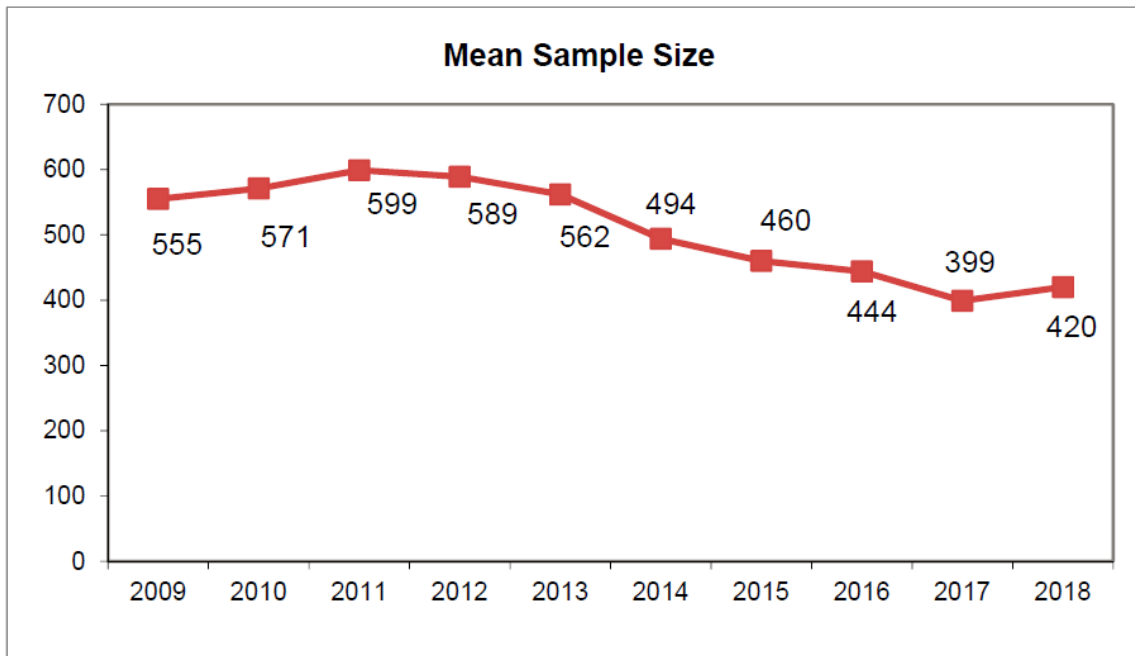


Figure 2.3
Mean LSAT Score for Combined First-Year Classes

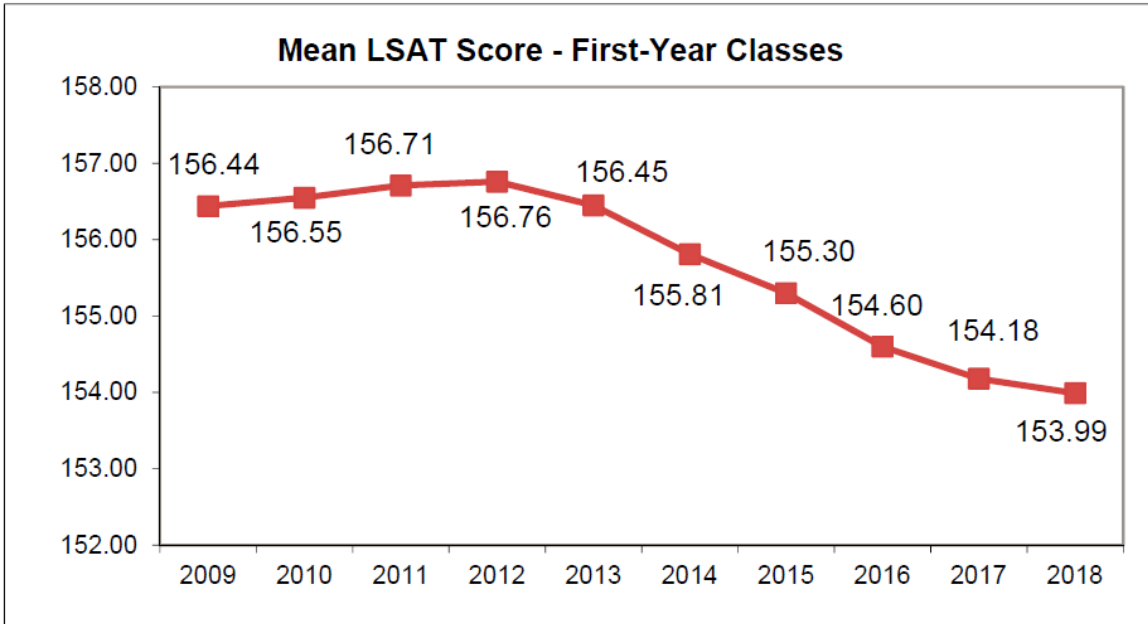


Figure 2.4
Mean LSAT Standard Deviation for Combined First-Year Classes

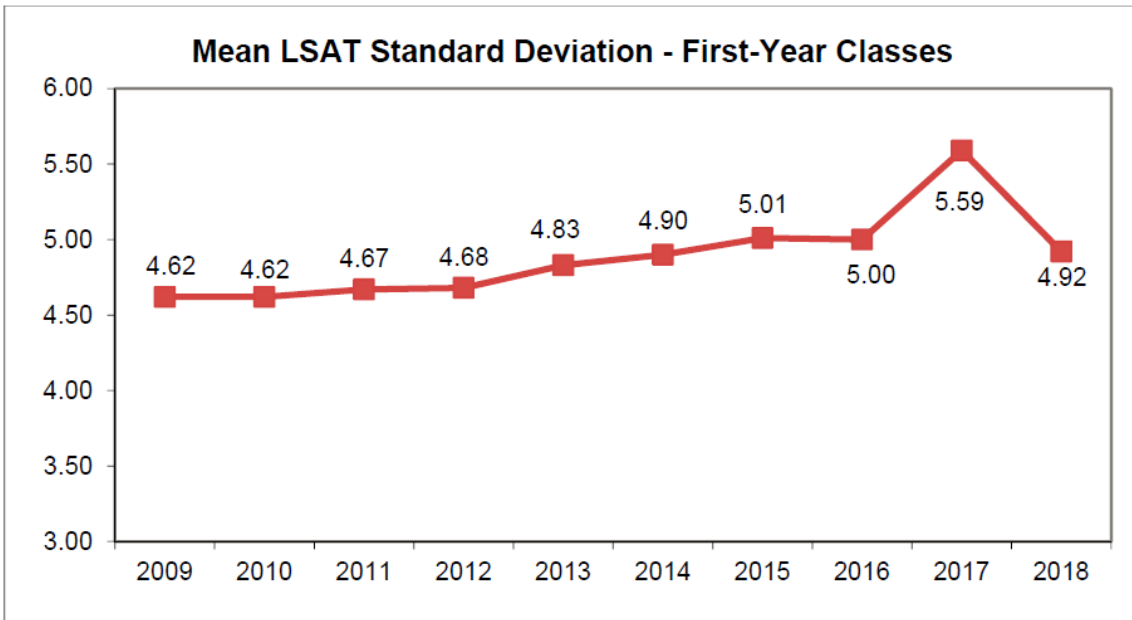


Table 2.2a
Summary Correlations for Participants
in the 2018 LSAT Correlation Studies Based on LSAT Score

Statistic	Correlations						
	LSAT/FYA		UGPA/FYA	LSAT/UGPA		LSAT+UGPA/FYA	
	Average	Highest		Average	Highest	Average	Highest
Mean	0.41	0.38	0.26	-0.04	-0.08	0.50	0.49
Standard Deviation	0.09	0.09	0.10	0.15	0.16	0.08	0.08
Range							
Minimum	0.14	0.14	0.01	-0.46	-0.53	0.20	0.22
Maximum	0.67	0.64	0.47	0.30	0.27	0.73	0.70
Percentiles							
25th	0.35	0.32	0.20	-0.14	-0.19	0.45	0.43
50 th (median)	0.40	0.38	0.28	-0.04	-0.08	0.50	0.49
75th	0.46	0.44	0.33	0.06	0.04	0.55	0.54

Table 2.2b
Summary of Corrected Correlations for Participants
in the 2018 LSAT Correlation Studies Based on LSAT Score

Statistic	Correlations						
	LSAT/FYA		UGPA/FYA	LSAT/UGPA		LSAT+UGPA/FYA	
	Average	Highest		Average	Highest	Average	Highest
Mean	0.60	0.60	0.43	0.26	0.25	0.67	0.67
Standard Deviation	0.07	0.07	0.06	0.05	0.05	0.06	0.06
Range							
Minimum	0.29	0.38	0.21	0.12	0.10	0.32	0.41
Maximum	0.82	0.80	0.57	0.45	0.44	0.85	0.84
Percentiles							
25th	0.57	0.56	0.39	0.23	0.21	0.63	0.63
50th (median)	0.61	0.61	0.43	0.26	0.25	0.68	0.68
75th	0.64	0.65	0.47	0.30	0.28	0.71	0.71

Figure 2.5
Differences in LSAT+UGPA/FYA Correlations

Figure 2.5
Differences in LSAT, UGPA/FYA Correlations

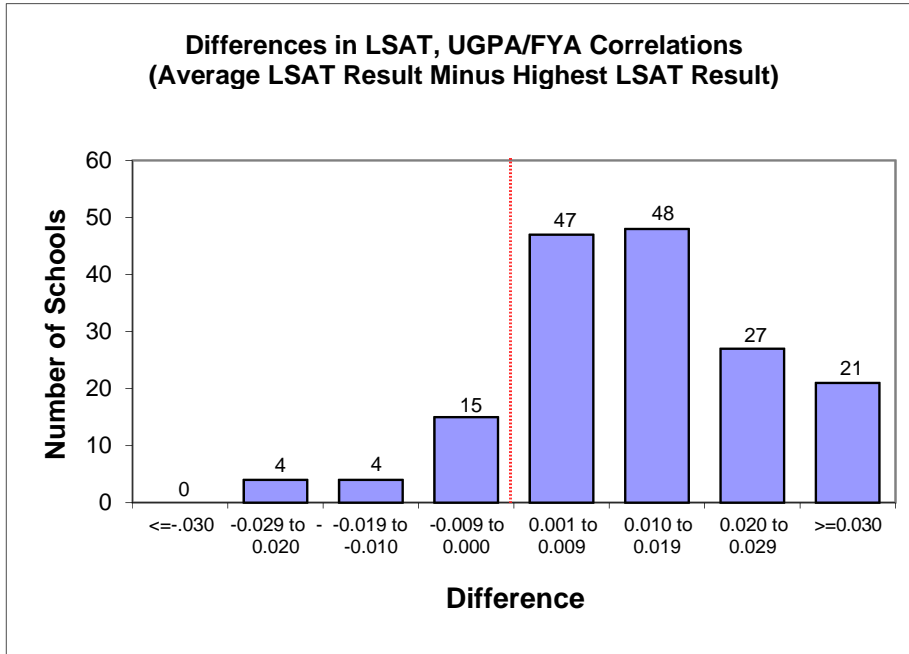
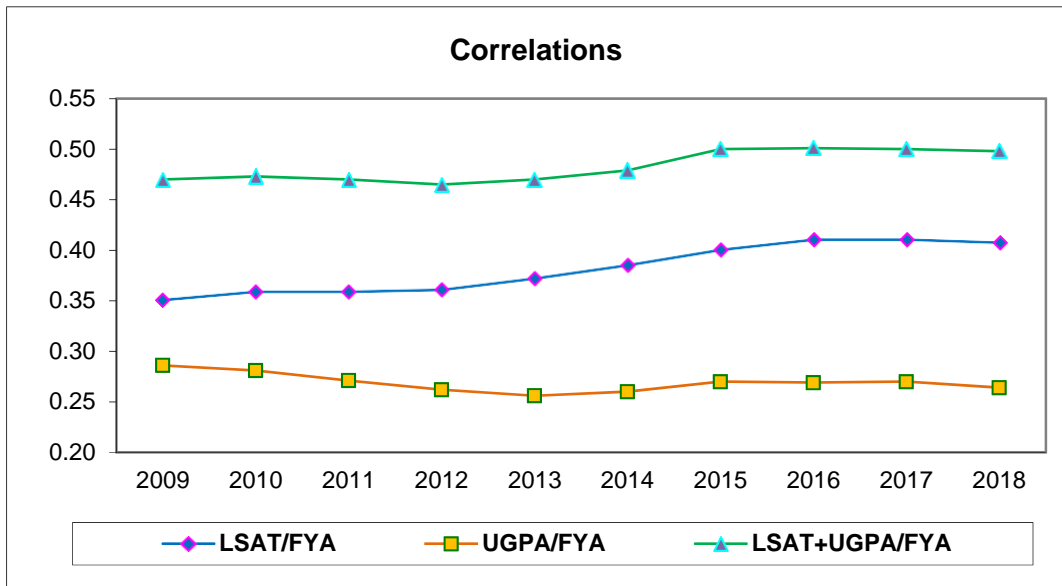


Table 2.3
Differences in Correlation Coefficients
(Average LSAT Score Minus Highest LSAT Score)

Difference Statistic	Prediction Model	
	LSAT+UGPA	LSAT Only
Mean	0.01	0.03
Standard Deviation	0.01	0.02
Range		
Minimum	-0.02	-0.02
Maximum	0.06	0.07
Percentages		
25th	0.00	0.01
50th (median)	0.01	0.03
75th	0.02	0.04

Figure 2.6
Trends in Correlation Results*



* Using average LSAT score.

Table 2.4
Trends in Correlation Results*

	2009	2010	2011	2012	2013	2014	2015	2016	2017	2018
LSAT/FYA	0.35	0.36	0.36	0.36	0.37	0.39	0.40	0.41	0.41	0.41
UGPA/FYA	0.29	0.28	0.27	0.26	0.26	0.26	0.27	0.27	0.27	0.26
LSAT/UGPA	-0.06	-0.06	-0.07	-0.07	-0.07	-0.05	-0.04	-0.03	-0.04	-0.04
LSAT+UGPA/FYA	0.47	0.47	0.47	0.47	0.47	0.48	0.50	0.50	0.50	0.50

* Using average LSAT score.

Figure 2.7
Distribution of Prediction of FYA

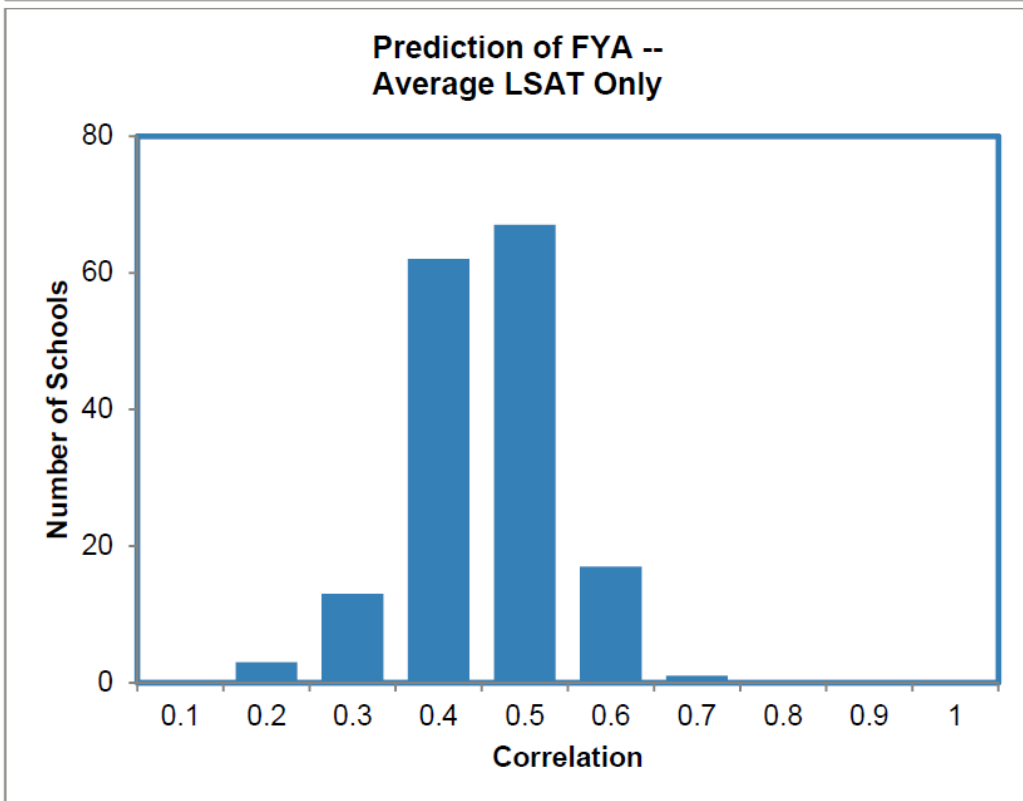
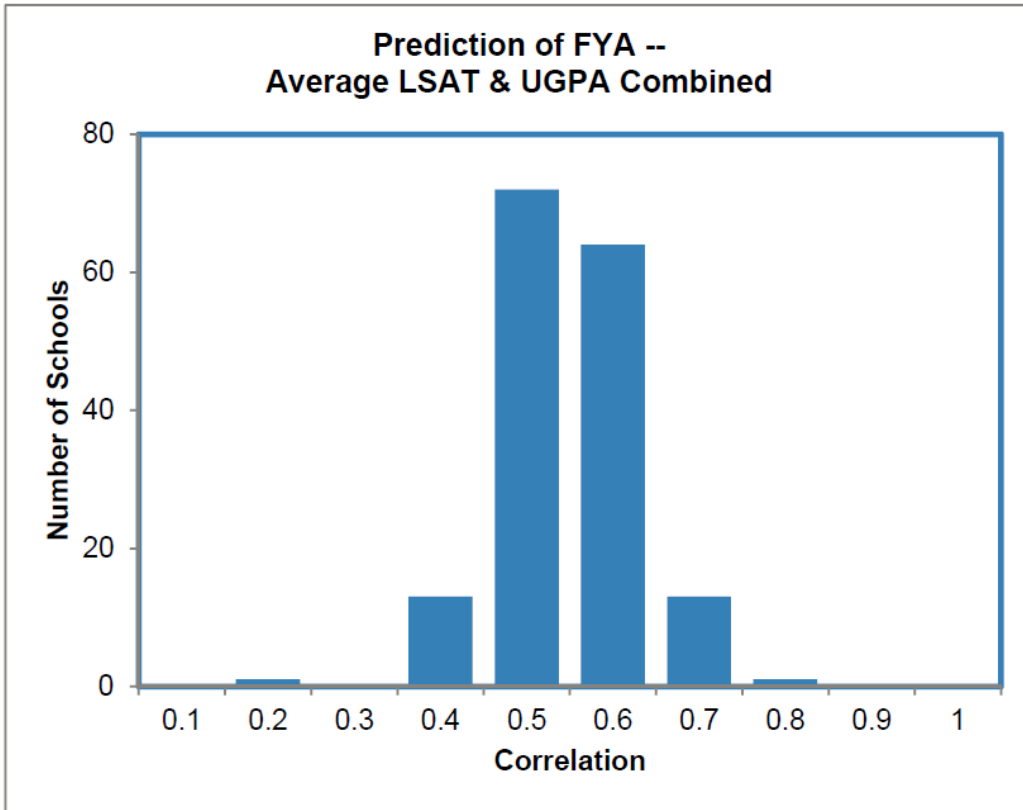


Figure 2.7 (continued)
Distribution of Prediction of FYA

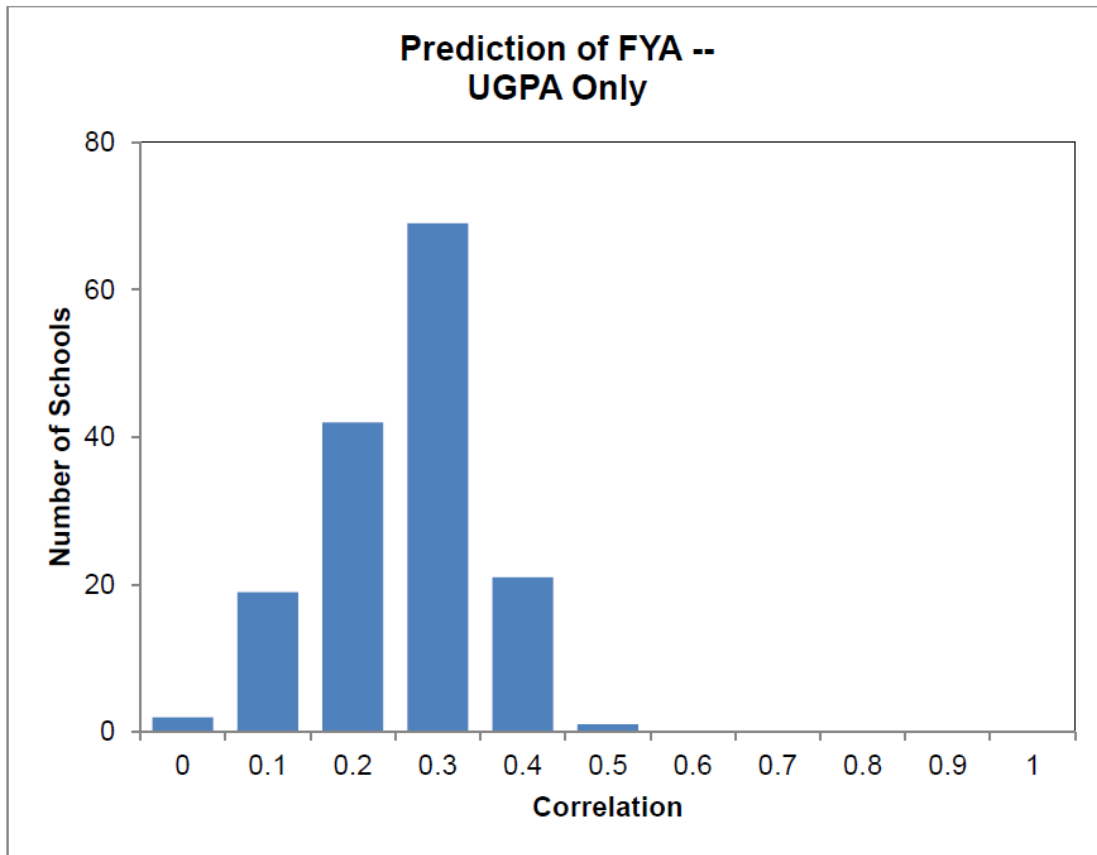


Table 2.5**Summary of Proportional Contributions by Predictor Variable in Predictive Formula**

Statistic	Average LSAT Score		Highest LSAT Score	
	LSAT	UGPA	LSAT	UGPA
Mean	59.83	40.17	57.69	42.31
Standard Deviation	7.57	7.57	7.50	7.50
Range				
Minimum	37.18	20.27	33.95	23.64
Maximum	79.73	62.82	76.36	66.05
Percentiles				
25th	54.48	34.69	52.83	36.78
50th (median)	60.10	39.91	57.78	42.23
75th	65.31	45.52	62.23	47.18

Table 2.6**Changes in Correlation Coefficients from 2017 to 2018 for Predictors of First-Year Average***

Difference Statistic	Prediction Model		
	Average LSAT Score + UGPA	Average LSAT Score Only	UGPA Only
Mean	-0.01	-0.01	-0.01
Standard Deviation	0.04	0.04	0.05
Range			
Minimum	-0.16	-0.12	-0.12
Maximum	0.11	0.15	0.14
Percentages			
25th	-0.03	-0.03	-0.03
50th (median)	-0.01	-0.01	0.00
75th	0.02	0.02	0.02

* The 2018 result less the 2017 result, based on the 158 schools who participated in both years.

Part 3. Results From 2019 LSAT Correlation Study

The annual LSAT Correlation Studies provide important information about the predictive validity of LSAT scores and undergraduate grade point averages (UGPAs) at each law school and their relationship to their students' first-year law school grades. Previous LSAT Correlation Studies have confirmed that LSAT score is a good predictor of first-year law school performance. The findings have also verified that the combination of LSAT score and UGPA is usually better at predicting first-year performance than either factor alone.

From August 2019 through May 2020, 163 law schools participated in the 2019 cycle of the First-Year Performance/LSAT and UGPA Correlation Studies. The number of participants remains at the lower levels experienced since the inception of data disclosure agreements in 2012.

For most schools, the study was based on full-time students in the 2016, 2017, and 2018 fall-entering classes. Schools that instituted grade scale changes in 2017 or 2018, or those that did not participate in all 3 study years, may have data representing a different set of entering classes. Data for the fall 2018 entering class were combined with the data for up to two previous entering classes, as available, to update the validity analysis for each school.

The results for 158 ABA-approved schools and 5 Canadian schools are summarized in the tables and figures that follow (**Table 3.1, Figure 3.1**). Four schools are omitted from the rest of summary for the following reasons: insufficient combined class size, multiple entering classes and classifications, atypical score distributions, or a preference to be excluded from the summary.

In addition to the standard analysis, the study includes results for the school applicant pools and provides a multivariate correction for restriction of range. The corrected correlation estimates for the applicant pools (**Table 3.2b**) are higher than the raw correlations for the matriculant group (**Table 3.2a**) and should give a better assessment of the predictive validity of LSAT score and UGPA.

Although the outcomes for individual schools may have fluctuated from those obtained last year, the summary results are similar for these entering classes. The mean of the average LSAT scores for matriculants was similar to the prior cycle's results after having previously declined for 6 straight years. Score variation increased to levels similar to those observed in the 2017 cycle (**Figures 3.3 and 3.4**). The mean correlations of first-year average (FYA) with LSAT score remained stable (**Table 3.4, Figure 3.6**). Correlations of FYA with LSAT score alone and with the combined predictors have remained steady since the 2015 cycle.

In recognition of ABA reporting requirements, a second report based on highest LSAT score was produced for each school. For 135 (88%) of the schools, average LSAT score was a better predictor than highest LSAT score (**Figure 3.5**), although the difference was slight. This summary focuses on results obtained by using average LSAT score.

Table 3.1**Descriptive Statistics for Full Participants in the 2019 LSAT Correlation Studies**

Statistic	Variable			
	Combined Class Size	Average LSAT Score	Highest LSAT Score	UGPA*
Total Participants	163	163	163	159
Number of Schools**	159	159	159	157
Mean	452.92	153.93	155.05	3.36
Standard Deviation	215.77	5.38	5.38	0.19
Range				
Minimum	58	142.85	144.30	2.90
Maximum	1,245	168.64	170.23	3.83
Percentiles				
25th	285	150.18	151.22	3.23
50th (median)	433	153.22	154.23	3.35
75th	565	157.62	158.77	3.48

*Only schools with standard UGPA scale data are included.

**Summary data is based on these schools which met all participation requirements.

Figure 3.1
Trends in Correlation Studies Participation

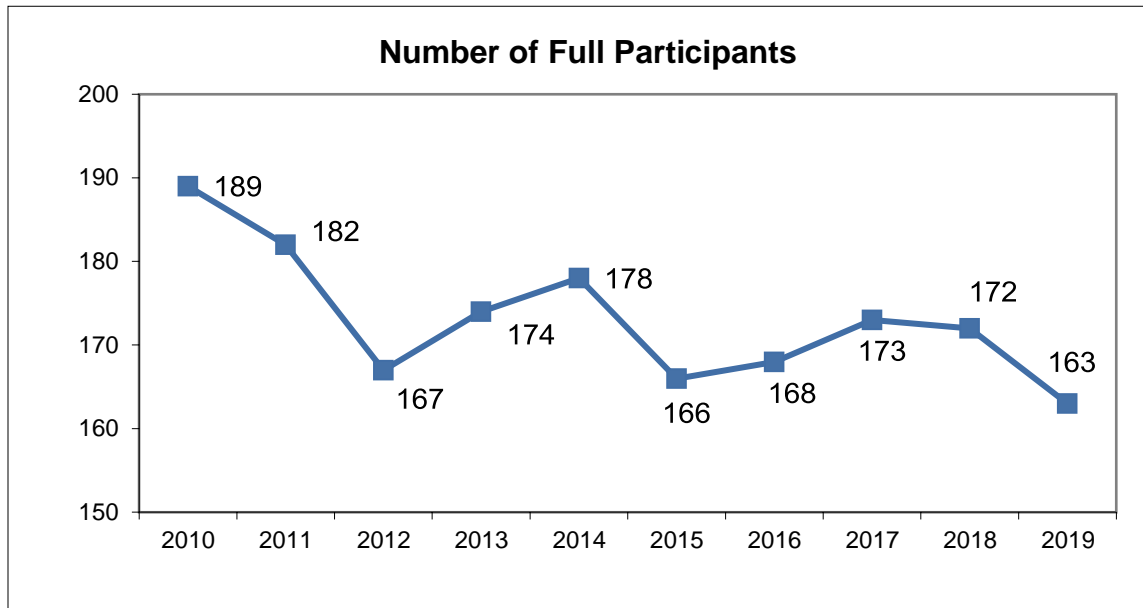


Figure 3.2
Trends in Mean Combined Class Size

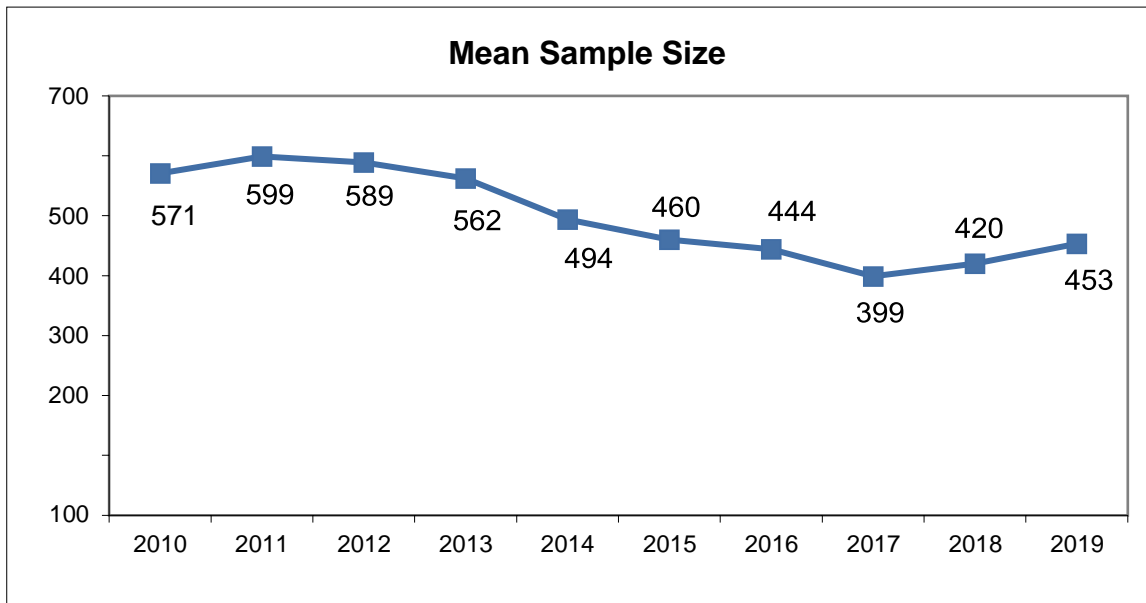


Figure 3.3
Mean LSAT Score for Combined First-Year Classes

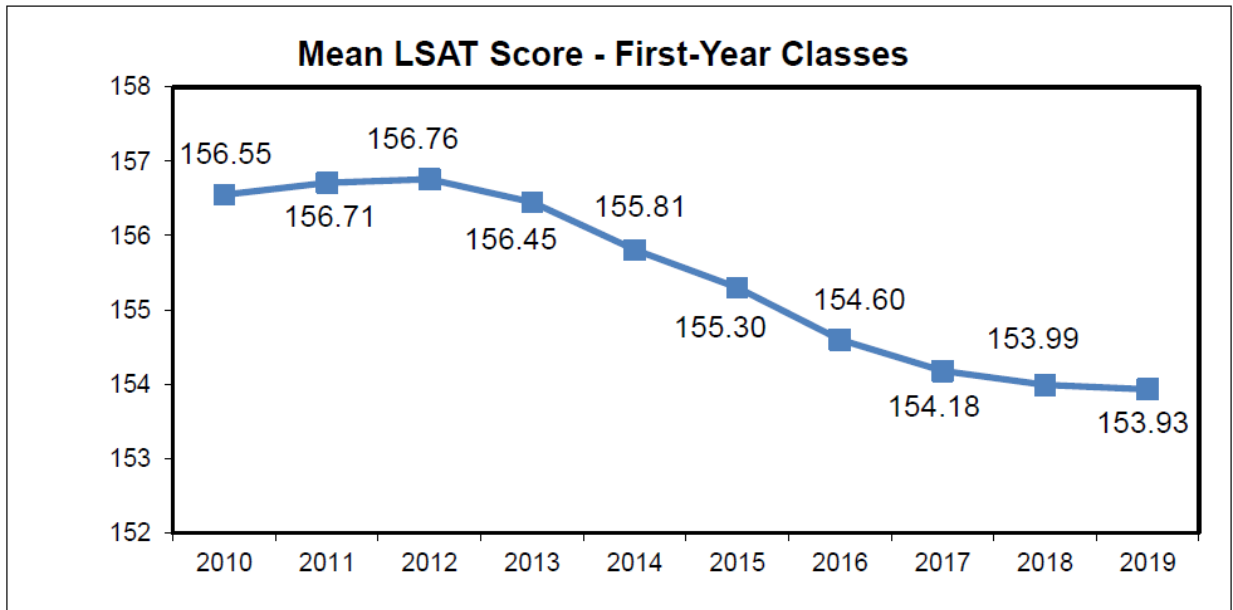


Figure 3.4
Mean LSAT Standard Deviation for Combined First-Year Classes

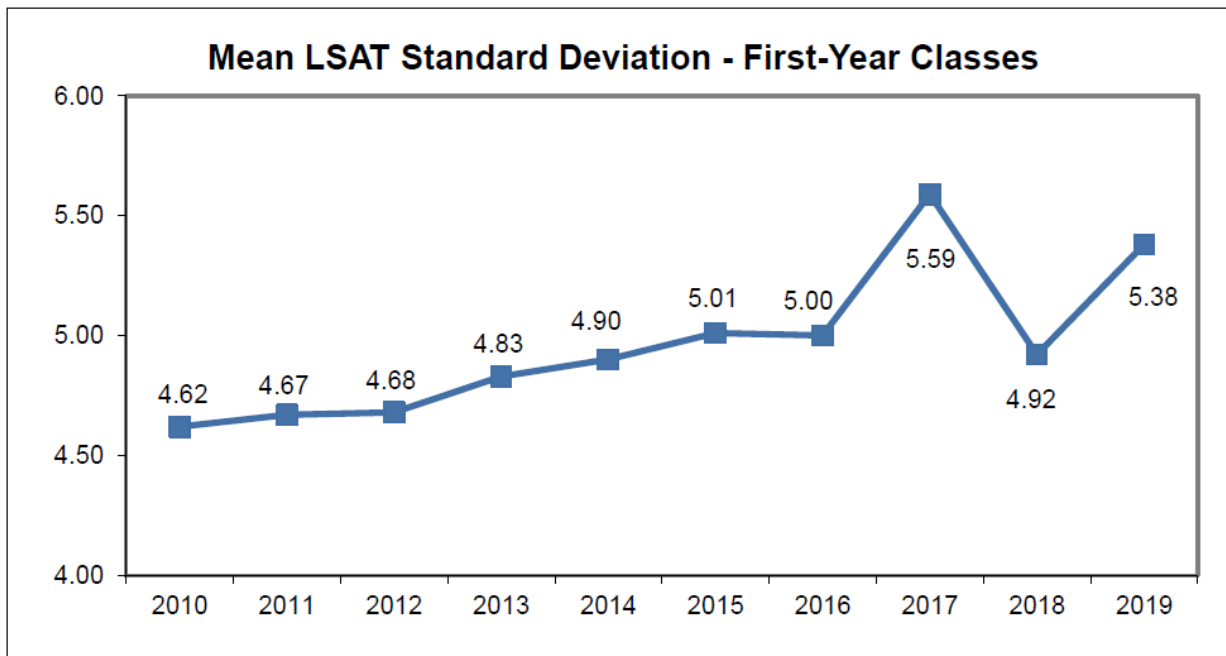


Table 3.2a

**Summary of Pearson Correlations for Participants
in the 2019 LSAT Correlation Studies Based on LSAT Score**

Statistic	Correlations						
	LSAT/FYA		UGPA/FYA	LSAT/UGPA		LSAT+UGPA/FYA	
	Average	Highest		Average	Highest	Average	Highest
Mean	0.40	0.37	0.26	-0.06	-0.09	0.49	0.48
Standard Deviation	0.08	0.08	0.09	0.14	0.15	0.08	0.08
Range							
Minimum	0.20	0.18	0.04	-0.44	-0.50	0.28	0.25
Maximum	0.64	0.61	0.47	0.29	0.27	0.73	0.69
Percentiles							
25th	0.35	0.31	0.20	-0.15	-0.19	0.44	0.42
50th (median)	0.40	0.37	0.26	-0.05	-0.08	0.50	0.48
75th	0.45	0.42	0.32	0.04	0.02	0.54	0.53

Table 3.2b

**Summary of Corrected Correlations for Participants
in the 2019 LSAT Correlation Studies Based on LSAT Score**

Statistic	Correlations						
	LSAT/FYA		UGPA/FYA	LSAT/UGPA		LSAT+UGPA/FYA	
	Average	Highest		Average	Highest	Average	Highest
Mean	0.60	0.59	0.42	0.25	0.24	0.66	0.66
Standard Deviation	0.07	0.07	0.06	0.06	0.06	0.06	0.06
Range							
Minimum	0.39	0.38	0.21	0.13	0.11	0.43	0.42
Maximum	0.80	0.78	0.58	0.45	0.43	0.86	0.85
Percentiles							
25th	0.56	0.55	0.39	0.22	0.20	0.63	0.62
50th (median)	0.60	0.60	0.43	0.25	0.24	0.66	0.67
75th	0.64	0.63	0.46	0.28	0.27	0.70	0.70

Figure 3.5
Differences in LSAT+UGPA/FYA Correlations

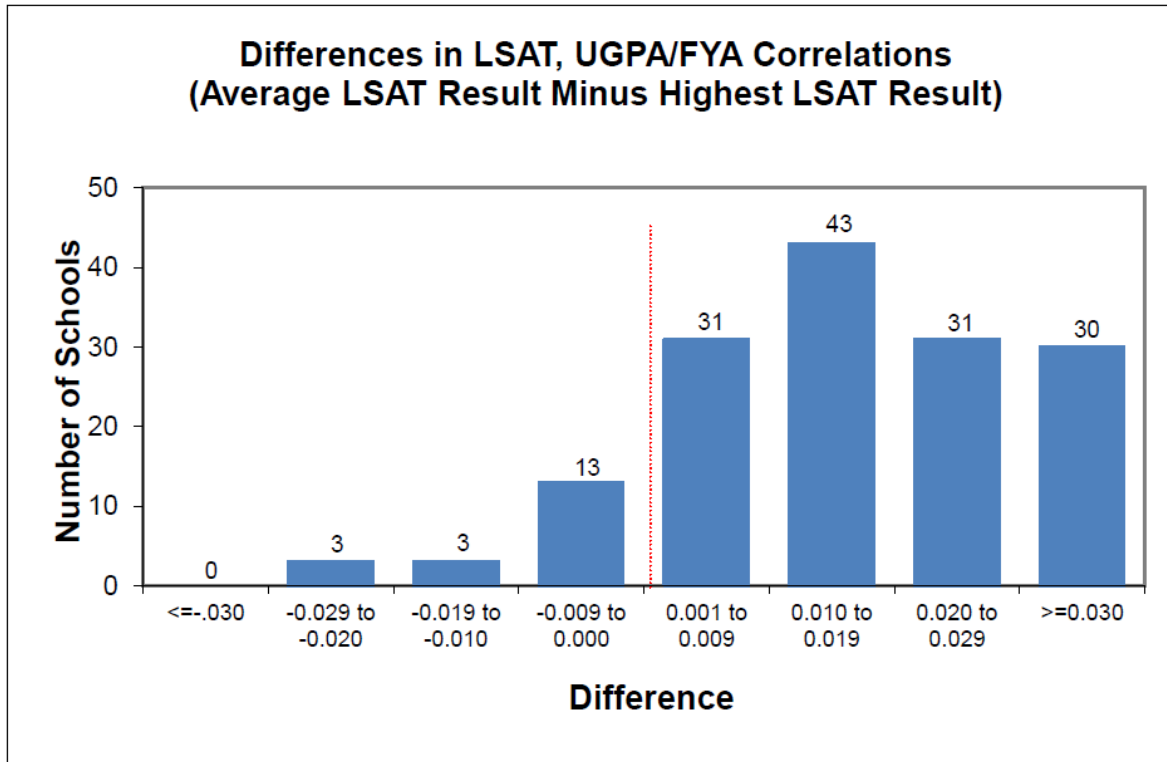
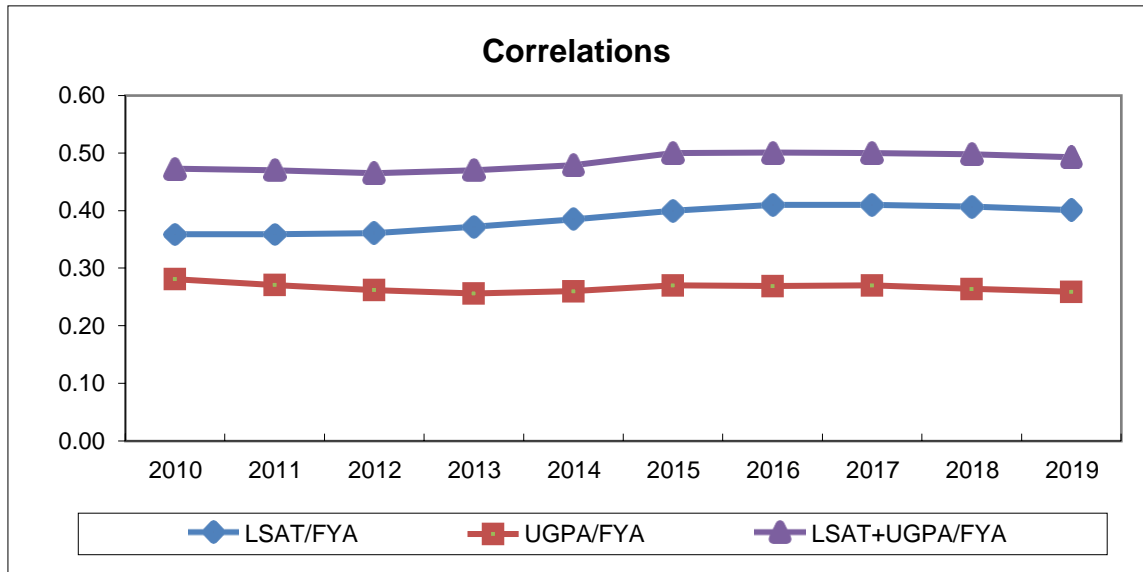


Table 3.3
Differences in Correlation Coefficients
(Average LSAT Score Minus Highest LSAT Score)

Difference Statistic	Prediction Model	
	LSAT+UGPA	LSAT Only
Mean	0.02	0.03
Standard Deviation	0.02	0.02
Range		
Minimum	-0.03	-0.02
Maximum	0.08	0.12
Percentages		
25th	0.01	0.02
50th (median)	0.02	0.03
75th	0.03	0.04

Figure 3.6
Trends in Correlation Results*



* Using average LSAT score.

Table 3.4
Trends in Correlation Results*

	2010	2011	2012	2013	2014	2015	2016	2017	2018	2019
LSAT/FYA	0.36	0.36	0.36	0.37	0.39	0.40	0.41	0.41	0.41	0.40
UGPA/FYA	0.28	0.27	0.26	0.26	0.26	0.27	0.27	0.27	0.26	0.26
LSAT/UGPA	-0.06	-0.07	-0.07	-0.07	-0.05	-0.04	-0.03	-0.04	-0.04	-0.06
LSAT+UGPA/FYA	0.47	0.47	0.47	0.47	0.48	0.50	0.50	0.50	0.50	0.49

* Using average LSAT score.

Figure 3.7
Distribution of Prediction of FYA

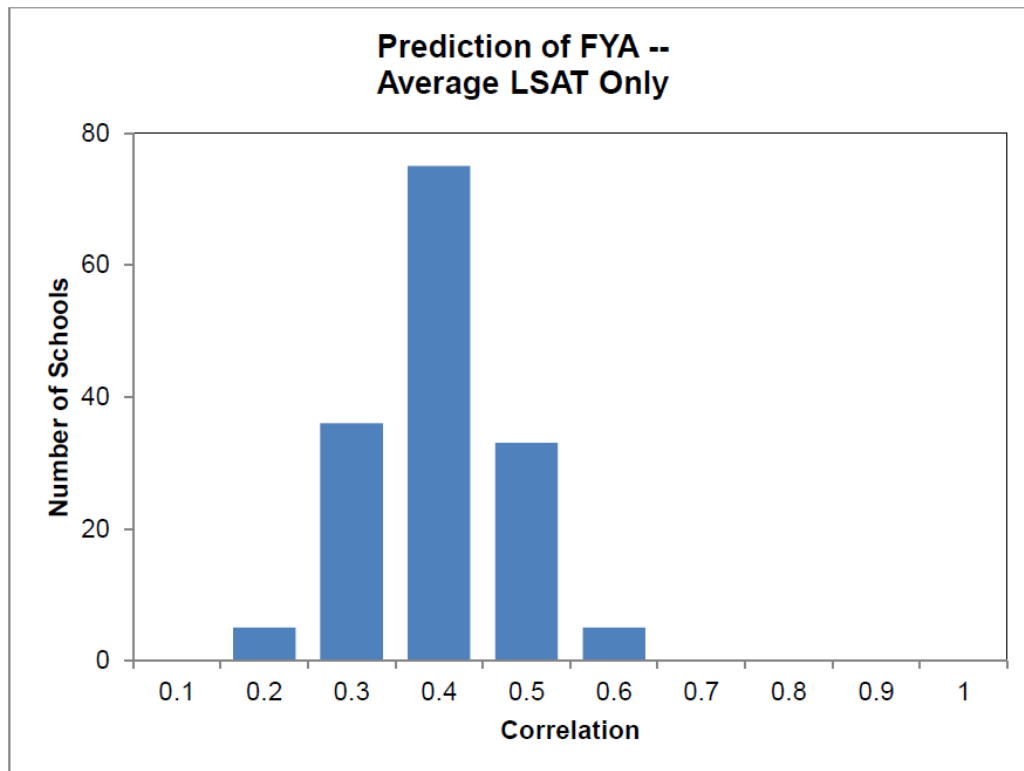
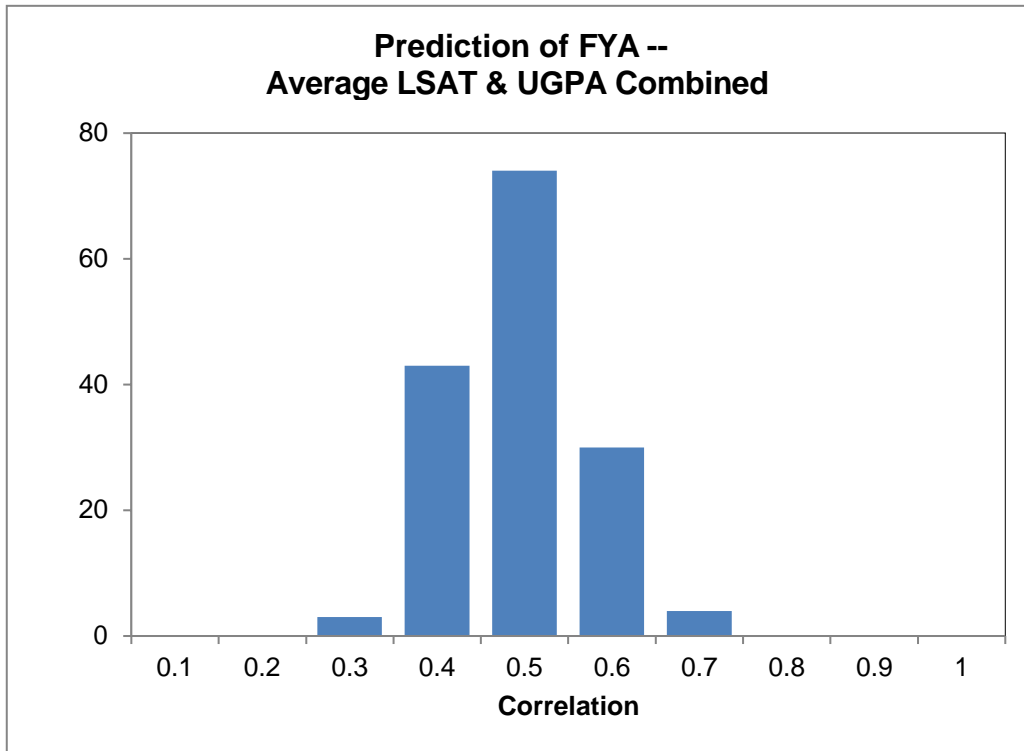


Figure 3.7 (continued)
Distribution of Prediction of FYA

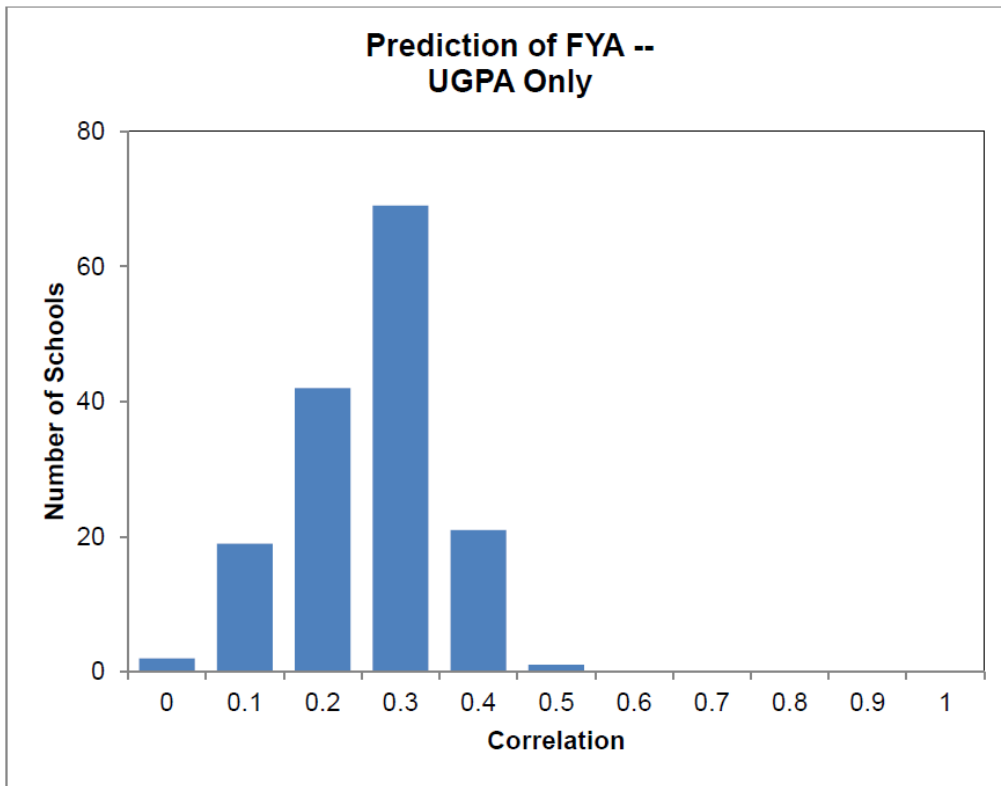


Table 3.5
Summary of Proportional Contributions by Predictor Variable in Predictive Formula

Statistic	Average LSAT Score		Highest LSAT Score	
	LSAT	UGPA	LSAT	UGPA
Mean	59.44	40.56	57.19	42.81
Standard Deviation	7.13	7.13	7.16	7.16
Range				
Minimum	40.62	23.47	35.13	26.45
Maximum	76.53	59.38	73.55	64.87
Percentiles				
25th	55.31	35.89	53.09	38.00
50th (median)	59.50	40.50	57.52	42.48
75th	64.11	44.69	62.00	46.91

Table 3.6**Changes in Correlation Coefficients from 2018 to 2019 for Predictors of First-Year Average***

Difference Statistic	Prediction Model		
	Average LSAT Score + UGPA	Average LSAT Score Only	UGPA Only
Mean	0.00	0.00	0.00
Standard Deviation	0.03	0.04	0.04
Range			
Minimum	-0.11	-0.14	-0.12
Maximum	0.17	0.09	0.18
Percentages			
25th	-0.02	-0.03	-0.03
50th (median)	-0.01	-0.01	0.00
75th	0.02	0.02	0.02

* The 2019 result less the 2018 result, based on the 145 schools who participated in both years.